



RJG, Inc.  
**Analyzer**

Quickstart  
© 2001, 2002

# Table of Contents

Launch the Analyzer Program .....	1
Select a Folder .....	2
Select Start Date and End Date .....	2
Select an Application .....	2
Cycle Graph .....	3
Summary Graph .....	4
Data Export .....	5
Statistics Screen .....	6
Part Measurements .....	7

# List of Illustrations

Figure 1	Analyzer.....	1
Figure 2	Cycle Graph.....	3
Figure 3	Summary Graph.....	4
Figure 4	Data Export Tool.....	5
Figure 5	Statistics Screen.....	6
Figure 6	Part Measurements Tool.....	7



## RJG Insight Analyzer Software Installation Instructions

1. Insert the RJG Insight Software Installation CD into the CD drive.
2. Double click on the “My Computer” icon on the desktop.
3. Double click the CD drive. For example, double click D:\RJG Analyzer.
4. Double click the RJG Insight Analyzer setup.exe file to run the installation.
5. Follow the instructions in the installation software.

Upon completion, you will find an RJG Insight icon on your desktop.

1. Double click the RJG Insight icon.
2. Double click the Analyzer shortcut to run the program.

Please contact RJG Customer Support at (231) 947-3111 Extension 170 for any questions.

# Analyzer

A Windows application for use with RJG's DARTVision™ or Insight System™

## 1. Launch the Analyzer

The main screen of the Analyzer is the data selector. The Data Directory at the left side of the screen lists directories where data has been saved (by mold).

Scan Network for eDARTS

The Analyzer will also scan your network for any eDARTs hooked up and will display data from those.

At the bottom of the screen is a toolbar where you can select various tools for the viewing, analysis, or calculation of data.

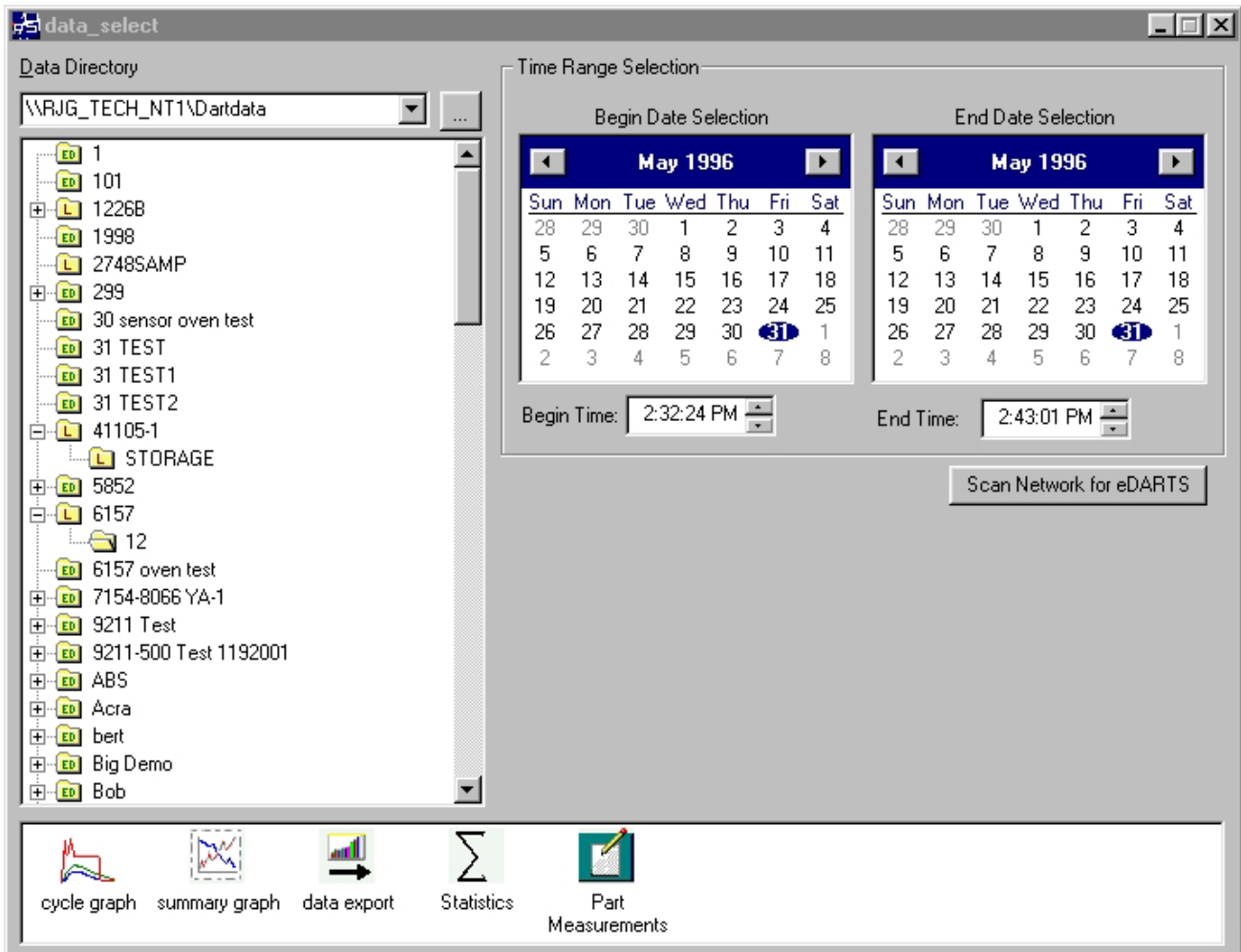


Figure 1: Analyzer

## 2. Select a folder

In the Data Directory, click on the folder with the name of the mold data you would like to view. If you want to choose a specific set of data from the folder, click the “+” to the left of the folder. This will expand the directory and give more specific options.

**Note:** If the folder is labeled “L”, it contains local data (data from the directory you chose above). If the folder is labeled “ED”, that data is from an eDART™ on the network.

## 3. Select Start and End Date

The two calendars on the right side of the screen allow you to choose a start date and end date for the data you have chosen to view. If the background color is gray, there is no data available to display. If it is white, data is available. The dates marked with bold text indicate dates where data exists. Using the calendar on the left, select the starting date for the data you would like to view. Using the calendar on the right, select the ending date. You can also select data starting and ending times below the calendars.

## 4. Select an Application

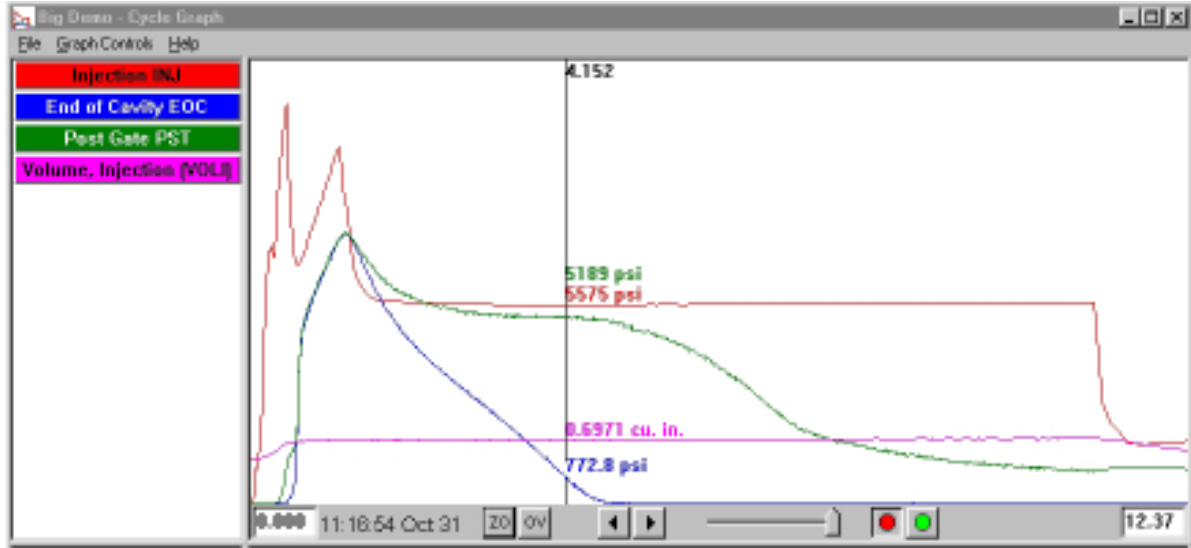
From the toolbar at the bottom of the screen, choose the application that you would like to use with your selected data range.





## Cycle Graph

The Cycle Graph displays saved cycle data, one shot at a time.



*Figure 2: Cycle Graph*

### Overlays

You can view multiple shots at a time by turning the Overlays function on (Press the *OV* button at the bottom of the screen).

### Zoom

To zoom in on a particular area of a curve, choose *Zoom* from the Graph Controls menu or right click and drag on the desired area of the graph.

### Cursor

The vertical cursor on the graph displays the numerical values for each curve. It can be moved on the graph by left clicking on the point you want the cursor to move to or left click and drag the cursor itself.

### Add a Curve

To add a curve that is not displayed, select *Add Curve* from the Graph Controls pull-down menu.

### Data Replay

You can scroll through data using the arrows at the bottom of the screen. The shot time stamp indicates the date and time each specific shot was made. You can replay the data by pressing the green button at the bottom of the screen. Set the replay speed using the slider to the left. As the cycles replay, the cursor will move on the summary graph (if both screens are visible) so you can see which cycle data corresponds to the summary data. The red button will stop replay.

### Save as Template

To use the cycle data on the graph as a template to compare other cycles against, select “Save as Template” from the Graph Controls menu. Type in a description of the template and press *Save*. The template can be modified in the Template Controls selection. These templates are readable by the eDART™.



summary graph

## Summary Graph

The Summary Graph provides a graphical display of summary values allowing you to view trends. Multiple summary value trends can be displayed here at one time. A summary value is a single number (data point) for each cycle; i.e. peak cycle integral, cycle time, etc.

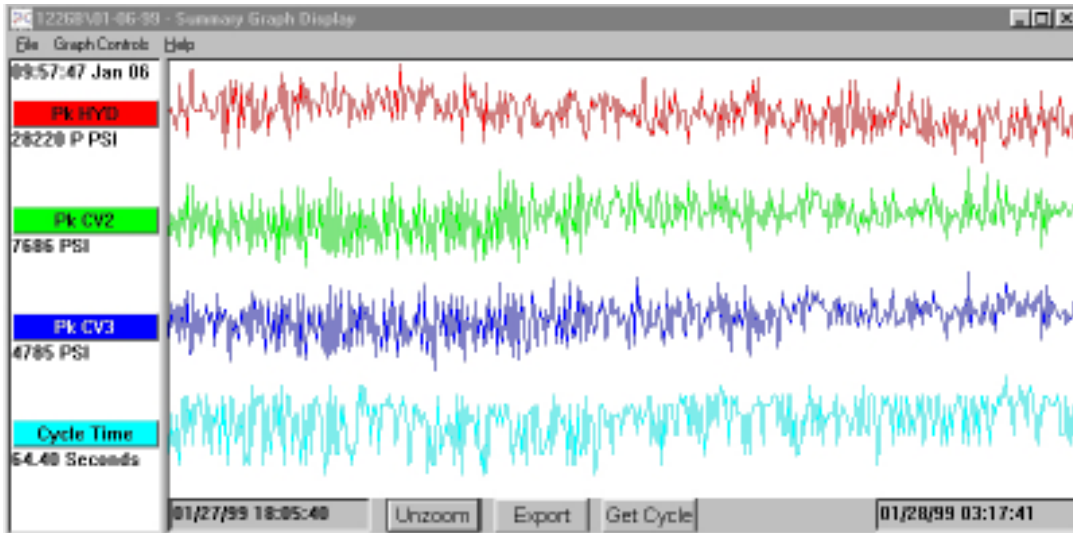


Figure 3: Summary Graph

### Title Bars

Displayed at the left side of the screen, these bars indicate which summary measurements are being shown on the graph. To add a measurement to the summary graph, choose “Add Curve” from the Graph Controls menu or click on the title bar and press the *Add Curve* button.

### Cursor

The cursor is the vertical line on the graph. It can be moved on the graph by left clicking on the point you want the cursor to move to or left click and drag the cursor itself. The numerical values for each data point are displayed underneath the title bars.

### Get Cycle

The *Get Cycle* button at the bottom of the screen will bring up the cycle graph for the data selected by the cursor.

### Export

Press this button to export the data on the summary graph to an Excel spreadsheet. To select only a certain area of the summary graph to export, zoom in on that area (right click and drag) and then press the *Export* button.

### Note

To add a note, place the cursor on the desired data point and choose *Add Note* from the Graph Controls menu. The note will appear as a small icon at the bottom of the graph. To view the note, simply click on its icon. To change the note, choose *Edit Note* from the Graph Controls menu.

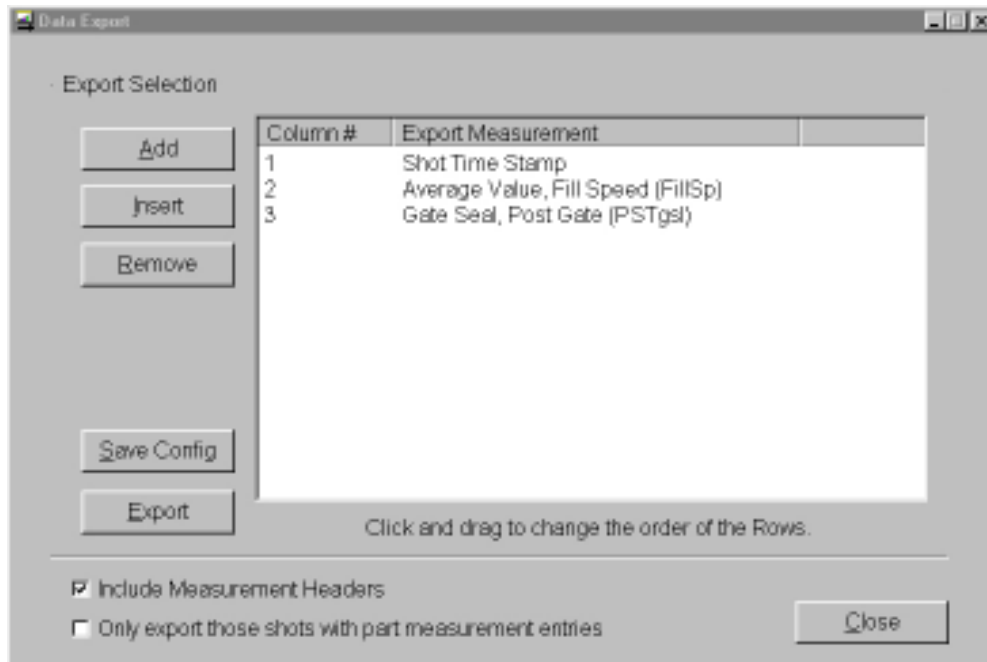
### Zoom/Unzoom

To zoom in on a particular area of a curve, choose *Zoom* from the Graph Controls menu or right click and drag on the desired area of the graph.



## Data Export

The Data Export tool allows you to choose summary measurements and export them to a csv (Excel readable) file where additional data analysis can be done. This tool can also be accessed from the summary graph.



*Figure 4: Data Export Tool*

### Adding/Removing Summary Measurements

Press *Add* and select a summary measurement and location from the list that you would like to view and press *OK*. The measurement header will appear at the end of the list.

To insert a measurement in a specific place in the list, highlight the measurement header directly below where you would like the new measurement to appear. Press *Insert* and select a summary measurement and location from the list. The measurement headers can also be moved around by clicking and dragging.

To remove a measurement that has already been added, highlight the header and press *Remove*.

### Save Config

Saves the specific measurement names. This is useful if you frequently export a particular format.

- Include Measurement Headers  
Check this box if you would like the measurement headers to be exported along with the data.
- Only Export those Shots with Part Measurement Entries  
Check this box if you would like to only export the Part Measurement data.

When finished, press *Export*.

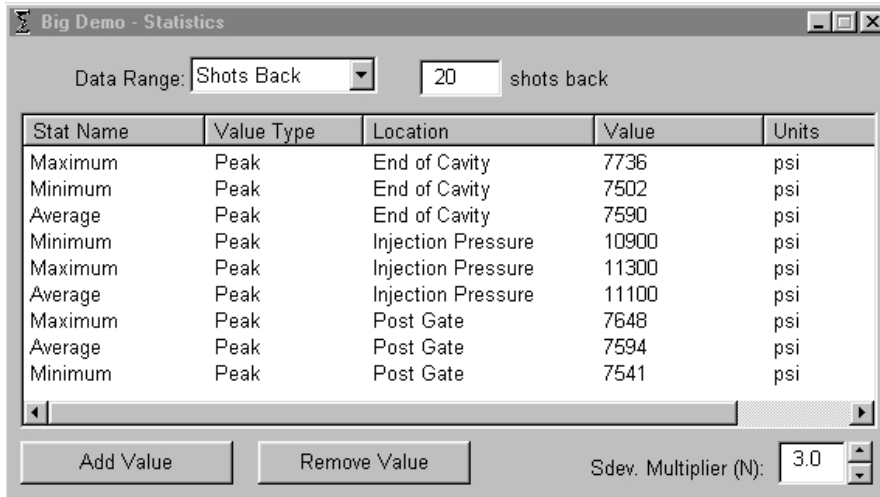
NOTE: Data Export works with summary data only.





## Statistics Screen

The Statistics screen will calculate average, standard deviation, etc. for the data range displayed on the summary screen.



**Figure 5:** Statistics Tool

### Adding/Removing Values

To add additional values, press *Add*. Choose the calculation (Average, Maximum, Minimum, Standard Deviation, etc.) you would like to apply to the selected data range and press *OK*. Select a summary measurement and location from the list that you would like to view and press *OK*. Repeat to add additional measurements. To remove a measurement that had already been added, highlight it and press *Remove*.

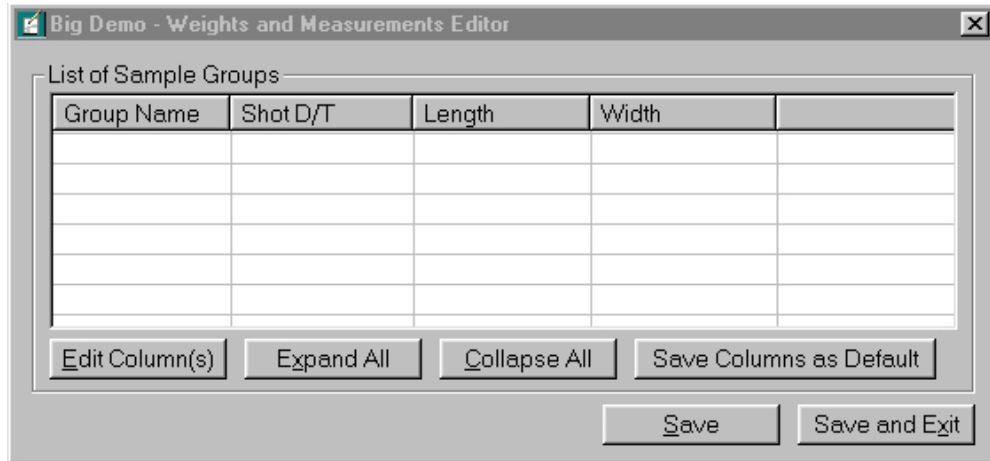
### Data Range

Choose a view (Summary View, Shots Back, or Whole View) from the Data Range combo box at the top of the screen. If you select Shots Back, you can indicate the number of shots.



## Part Measurements

The Part Measurements tool is used with the Part Sampling tool in the Insight System™ software. Using the Part Sampling tool, you can collect samples for later analysis by marking the datapoints where you took these. In the Part Measurements tool, you can enter part measurements.



*Figure 6: Part Measurements Tool*