

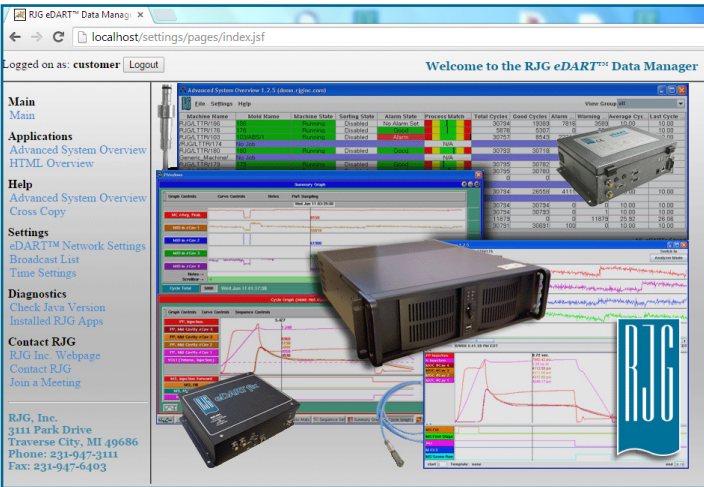


eDART® DATA MANAGER (EDM) SYSTEM REQUIREMENTS VERSION 2.7.X

HARDWARE SPECIFICATIONS

| ITEM | MIN. | RECOMMENDED |
|-----------------------------------------------|----------------------------------|-------------|
| CPU ¹ (32- or 64-bit) | 1 GHz | 1.4 GHz |
| RAM | 2 GB (32-bit) OR 4 GB (64-bit) | |
| OS Disk Space | 32 GB (32- or 64-bit) | |
| eDART Data Space | 1 TB | 2 TB |
| Graphics | Directx 9 w/WDDM 1.0 or higher | |
| Ethernet Adapter | Gigabit (10/100/1000baseT) | |
| Monitor | Super VGA (1024 x 768) or higher | |
| DVD Drive ² | | |
| Keyboard and Mouse, or other pointing device | | |
| LAN ³ Access w/internet connection | | |

¹ Recommendation for the CPU is not limited to the above specification.
² If installing OS from DVD
³ Local Area Network (LAN)—if not available, may still be configured by RJG Customer Support



The eDART® Data Manager (EDM) software sold by RJG, Inc. can be installed on customer-supplied hardware that meets or exceeds the following specifications. If it is desired to run the EDM on a version not listed here, or for further assistance, please contact RJG Customer Support.

OS SPECIFICATIONS

MICROSOFT® WINDOWS

| | |
|--------------|---------------|
| Windows 10 | 32- or 64-bit |
| Windows 8 | |
| Windows 7 | |
| Windows 2016 | |
| Windows 2012 | |
| Windows 2008 | |

Please follow the recommended requirement as specified by Microsoft for the version and platform of operating systems that is being used to run the EDM software.

It is recommended that the EDM system deploys a RAID 1 mirrored hard disk drive configuration or better for data storage. These are redundant methods which protects data in the event of a hard drive failure. It is to the preference of the customer to use a software or hardware RAID controller.

NOTE Hardware secured for the implementation of the EDM is the sole responsibility of the customer. RJG does not troubleshoot, support, or warranty issues associated with hardware failures.