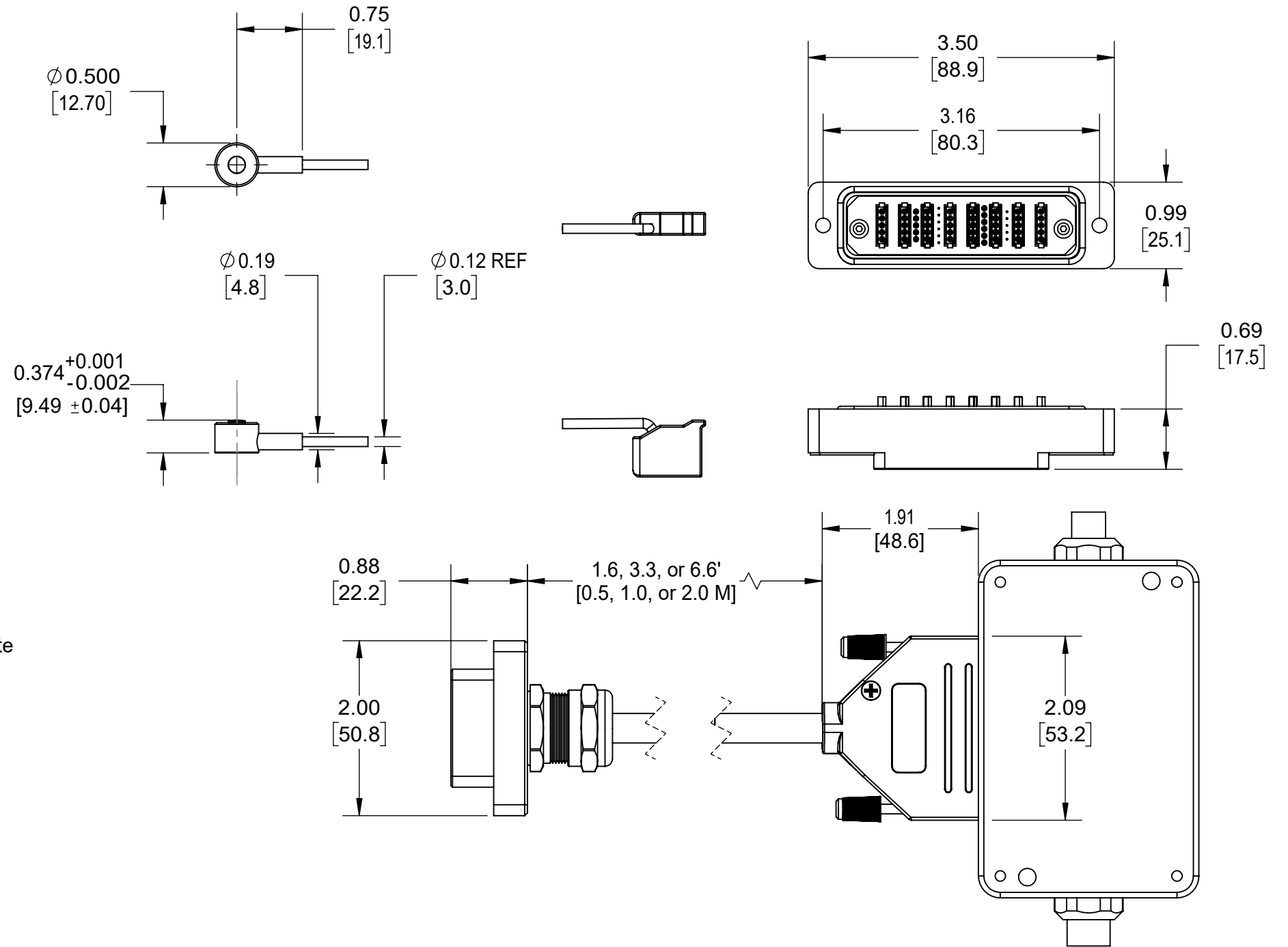
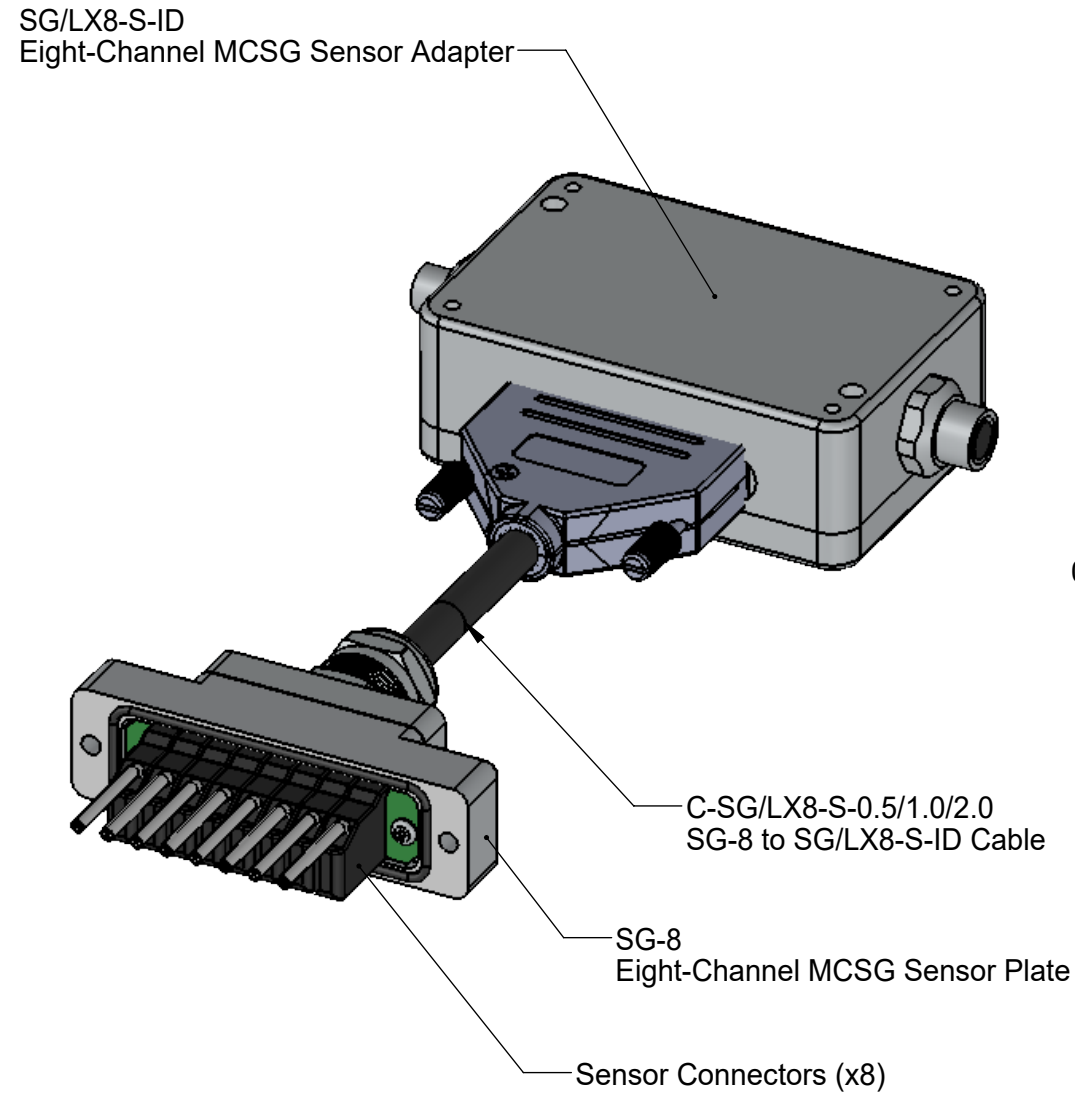



Drawing Title: MCSG-B-127-XXXX-01

Multi-Channel Strain Gage Sensor (MCSG-B-127-XXX) Installation—Sensor, Sensor Connector, and Sensor Cable Dimensions



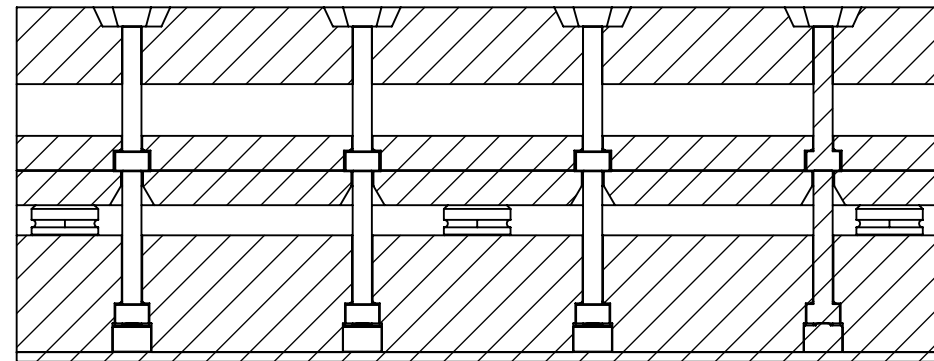
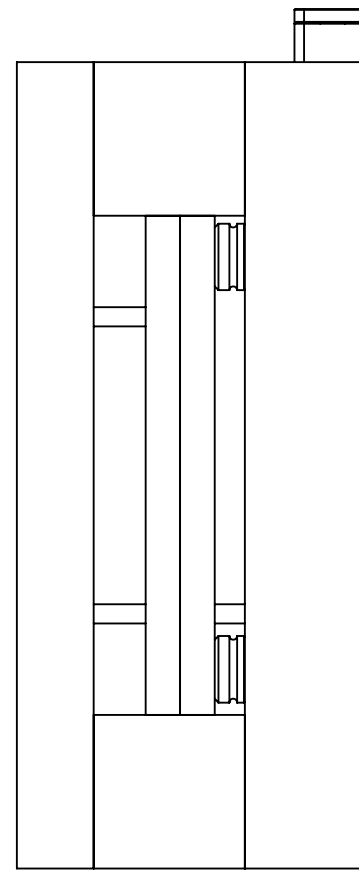
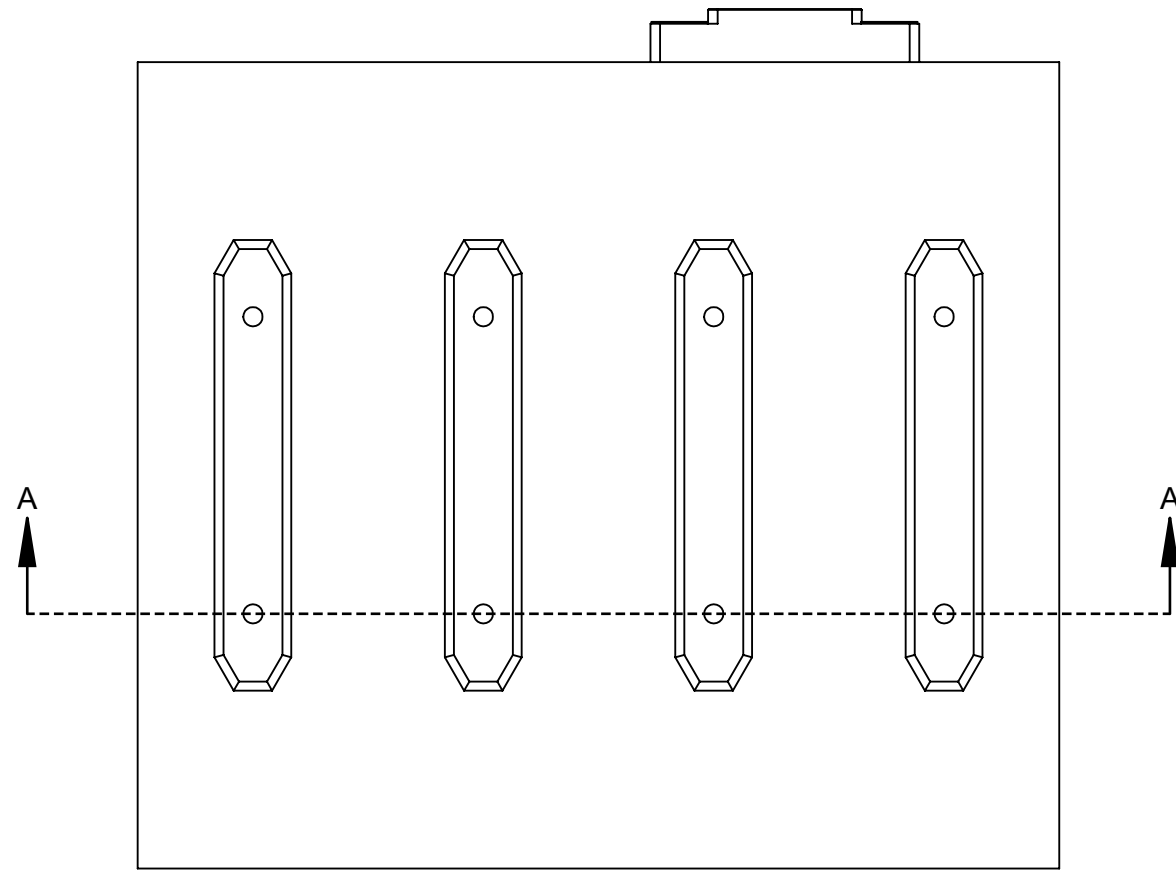
NOTES:

1. CLAMP PLATE APPLICATIONS REQUIRE GUIDED EJECTION
2. EJECTOR AND TRANSFER PIN CONCENTRICITY MUST BE WITHIN 0.030" [0.76] OR 10% OF EJECTOR PIN DIA, WHICHEVER IS SMALLER.
3. ENCLOSED EJECTOR BOX SUGGESTED.
4. DO NOT SCALE PRINT
5. BREAK ALL SHARP EDGES, 0.005 [0.03] R MAX
6. DIMENSIONS IN INCHES [MM], UNLESS NOTED
7. TOLERANCES UNLESS SPECIFIED:
 XXX = ±0.003 [0.08]
 XX = ±0.01 [0.3]
 ANGLES = ±3° 30°

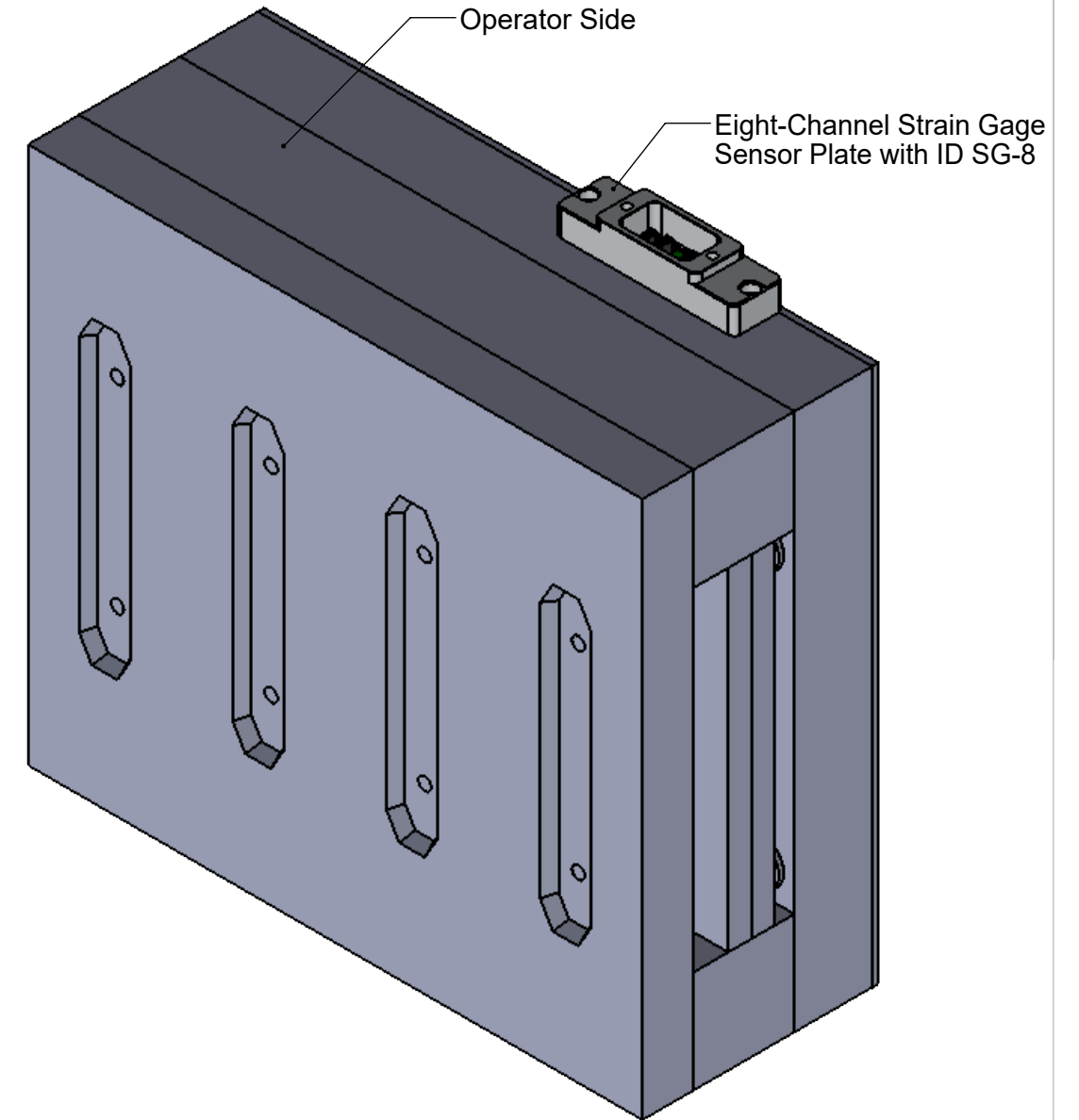
 <small>3111 Park Street, Traverse City, MI 49686 231-944-2111 www.rjg.com</small>	Description: MCSG-B-127-XXXX Sensor Installation
	Drawn: K.J.Brettschneider
	Design:
	Check: M.Groleau
Date: 05.30.2023	

Drawing Title: MCSG-B-127-XXXX-02

Multi-Channel Strain Gage Sensor (MCSG-B-127-XXXX) Installation—Clamp Plate Installation



SECTION A-A
SCALE 1 : 2.5



NOTES:

1. CLAMP PLATE APPLICATIONS REQUIRE GUIDED EJECTION
2. EJECTOR AND TRANSFER PIN CONCENTRICITY MUST BE WITHIN 0.030" [0.76] OR 10% OF EJECTOR PIN DIA, WHICHEVER IS SMALLER.
3. ENCLOSED EJECTOR BOX SUGGESTED.
4. DO NOT SCALE PRINT
5. BREAK ALL SHARP EDGES, 0.005 [0.03] R MAX
6. DIMENSIONS IN INCHES [MM], UNLESS NOTED
7. TOLERANCES UNLESS SPECIFIED:
 XXX = ± 0.003 [0.08]
 XX = ± 0.01 [0.3]
 ANGLES = $\pm 3^\circ 30'$



Description: MCSG-B-127-XXXX Sensor Installation
 Drawn: K.J.Brettschneider
 Design:
 Check: M.Groleau
 Date: 05.30.2023

Multi-Channel Strain Gage Sensor (MCSG-B-127-XXXX) Installation—Clamp Plate Installation

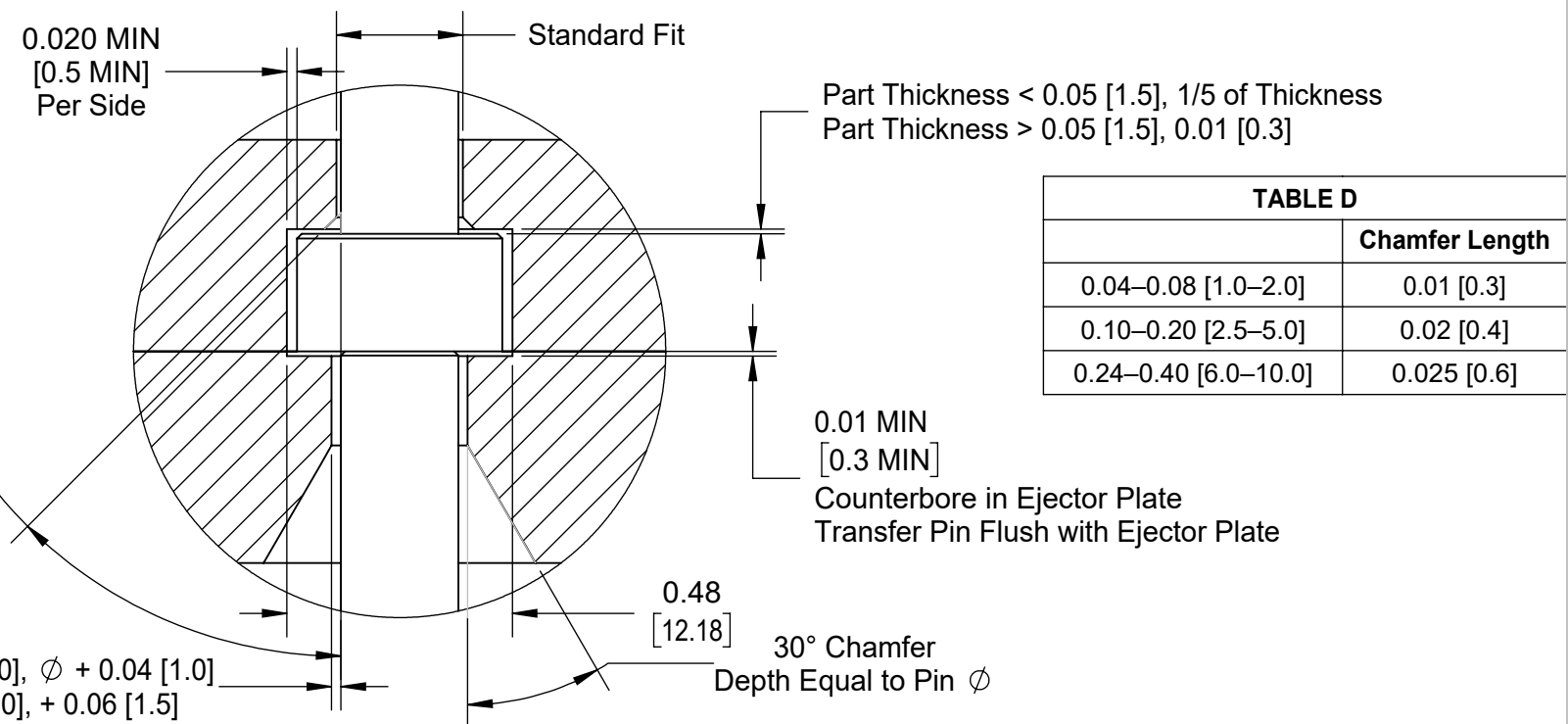
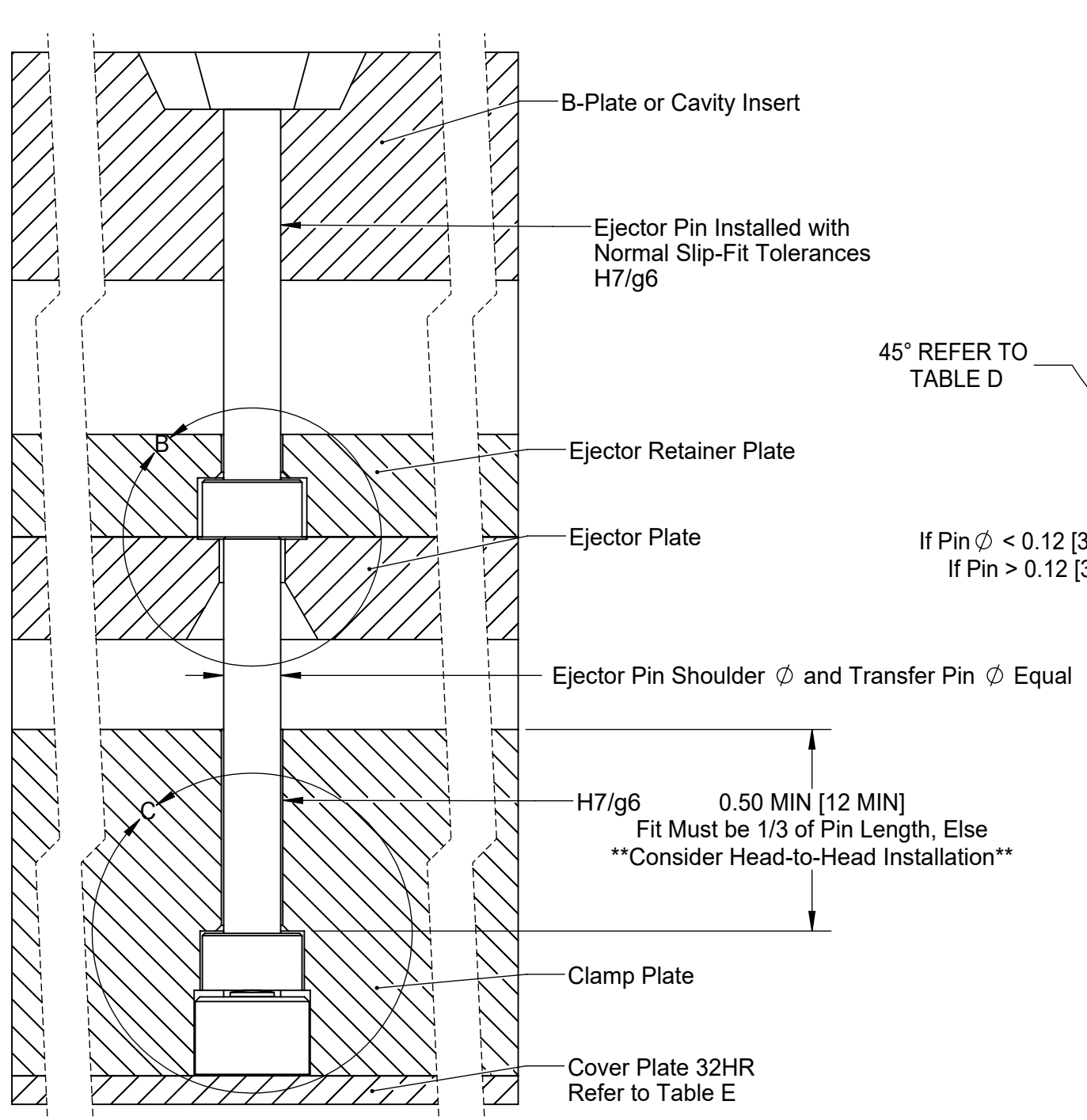
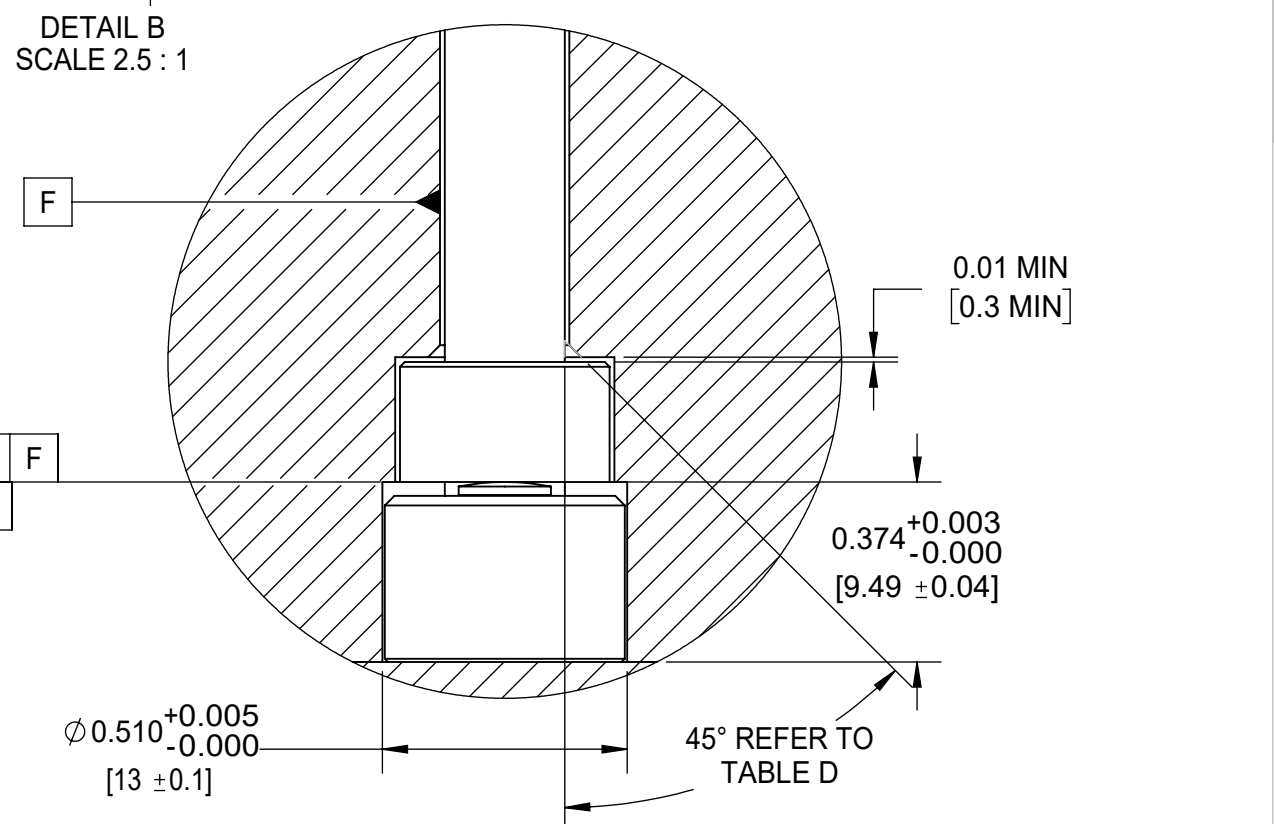


TABLE D	
	Chamfer Length
0.04–0.08 [1.0–2.0]	0.01 [0.3]
0.10–0.20 [2.5–5.0]	0.02 [0.4]
0.24–0.40 [6.0–10.0]	0.025 [0.6]



	0.001 [0.03]	F
	0.001 [0.03]	

- NOTES:
1. CLAMP PLATE APPLICATIONS REQUIRE GUIDED EJECTION
 2. EJECTOR AND TRANSFER PIN CONCENTRICITY MUST BE WITHIN 0.030" [0.76] OR 10% OF EJECTOR PIN DIA, WHICHEVER IS SMALLER. ENCLOSED EJECTOR BOX SUGGESTED.
 3. DO NOT SCALE PRINT
 4. BREAK ALL SHARP EDGES, 0.005 [0.03] R MAX
 5. DIMENSIONS IN INCHES [MM], UNLESS NOTED
 6. TOLERANCES UNLESS SPECIFIED:
XXX = ±0.003 [0.08]
XX = ±0.01 [0.3]
ANGLES = ±3° 30°
 - 7.

TABLE E	
Sensor Model	MIN Plate Thickness
MCSG-B-127-125	0.2 [5]
MCSG-B-127-500	0.25 [6.0]
MCSG-B-127-2000	0.25 [6.0]

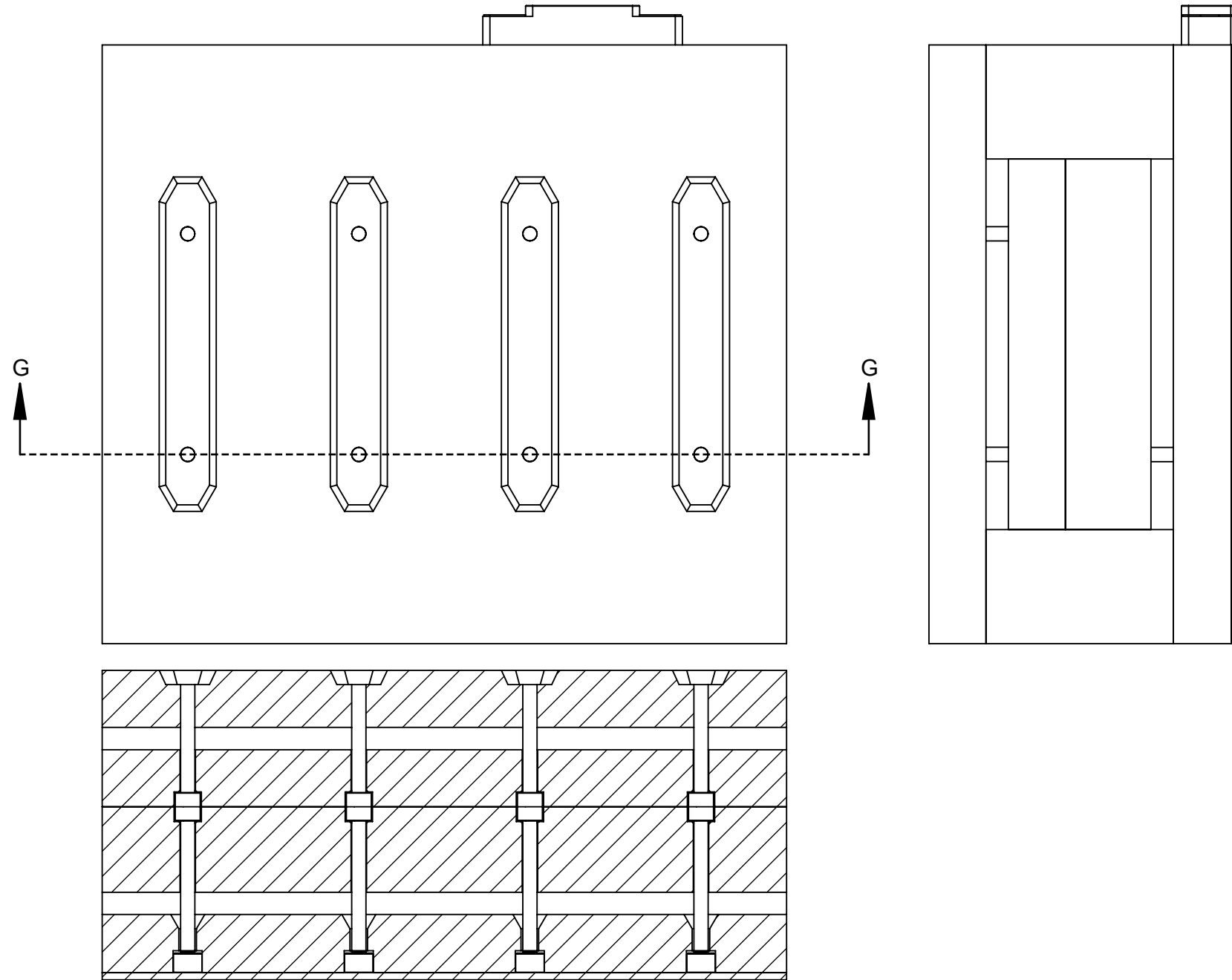
REFER TO PRODUCT MANUAL FOR COVER PLATE ALTERNATIVES

3111 Park Street, Traverse City, MI 49606
231-944-2111 | www.rjg.com

Description: MCSG-B-127-XXXX Sensor Installation
 Drawn: K.J.Brettschneider
 Design:
 Check: M.Groleau
 Date: 05.30.2023

Drawing Title: MCSG-B-127-XXXX-04

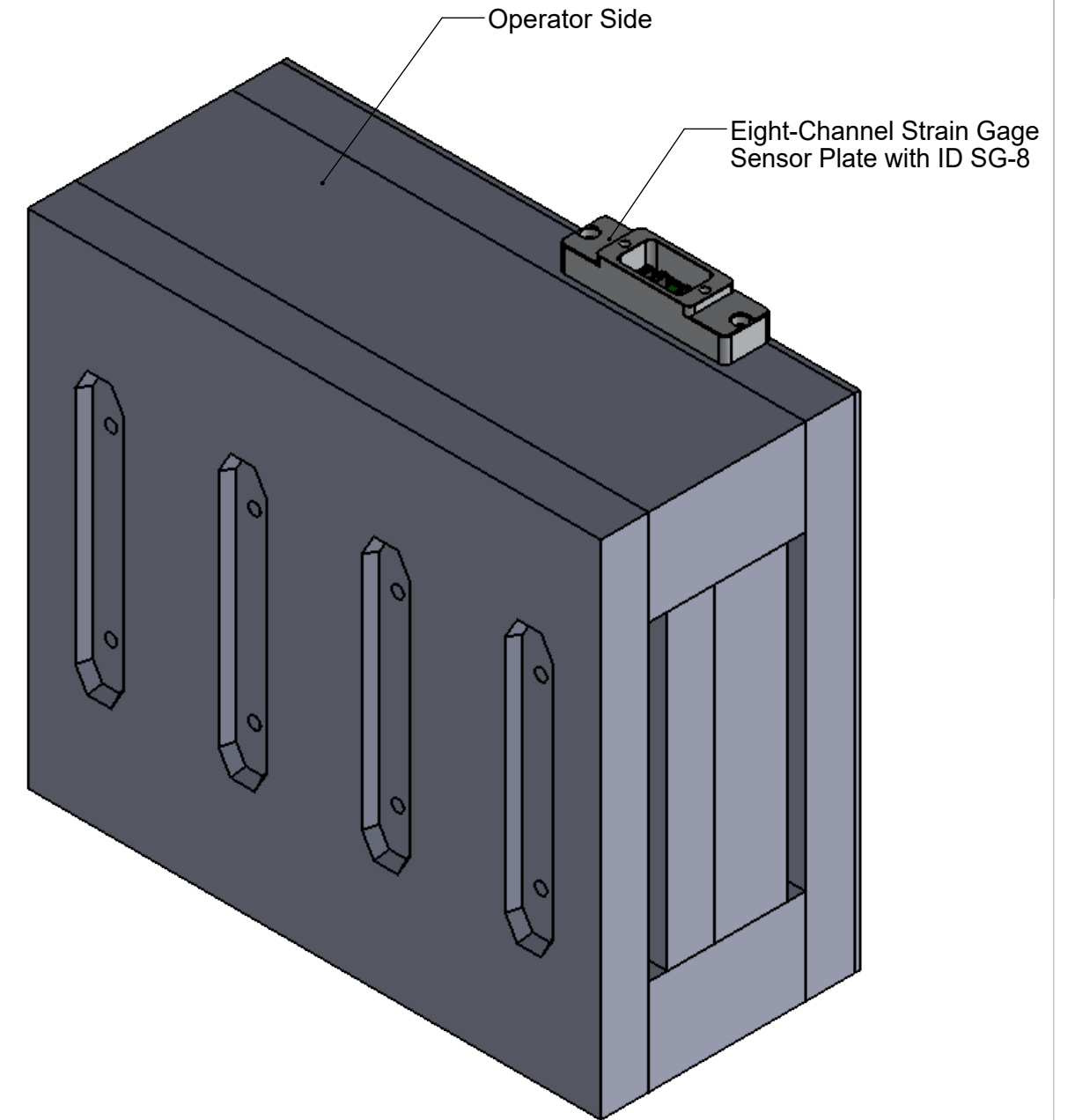
Multi-Channel Strain Gage Sensor (MCSG-B-127-XXXX) Installation—Head-to-Head Installation



SECTION G-G
SCALE 1 : 2.5

NOTES:

1. CLAMP PLATE APPLICATIONS REQUIRE GUIDED EJECTION
2. EJECTOR AND TRANSFER PIN CONCENTRICITY MUST BE WITHIN 0.030" [0.76] OR 10% OF EJECTOR PIN DIA, WHICHEVER IS SMALLER.
3. ENCLOSED EJECTOR BOX SUGGESTED.
4. DO NOT SCALE PRINT
5. BREAK ALL SHARP EDGES, 0.005 [0.03] R MAX
6. DIMENSIONS IN INCHES [MM], UNLESS NOTED
7. TOLERANCES UNLESS SPECIFIED:
 XXX = ± 0.003 [0.08]
 XX = ± 0.01 [0.3]
 ANGLES = $\pm 3^\circ$ 30°



Description: MCSG-B-127-XXXX Sensor Installation
 Drawn: K.J.Brettschneider
 Design:
 Check: M.Groleau
 Date: 05.30.2023

Multi-Channel Strain Gage Sensor (MCSG-B-127-XXXX) Installation—Head-to-Head Installation

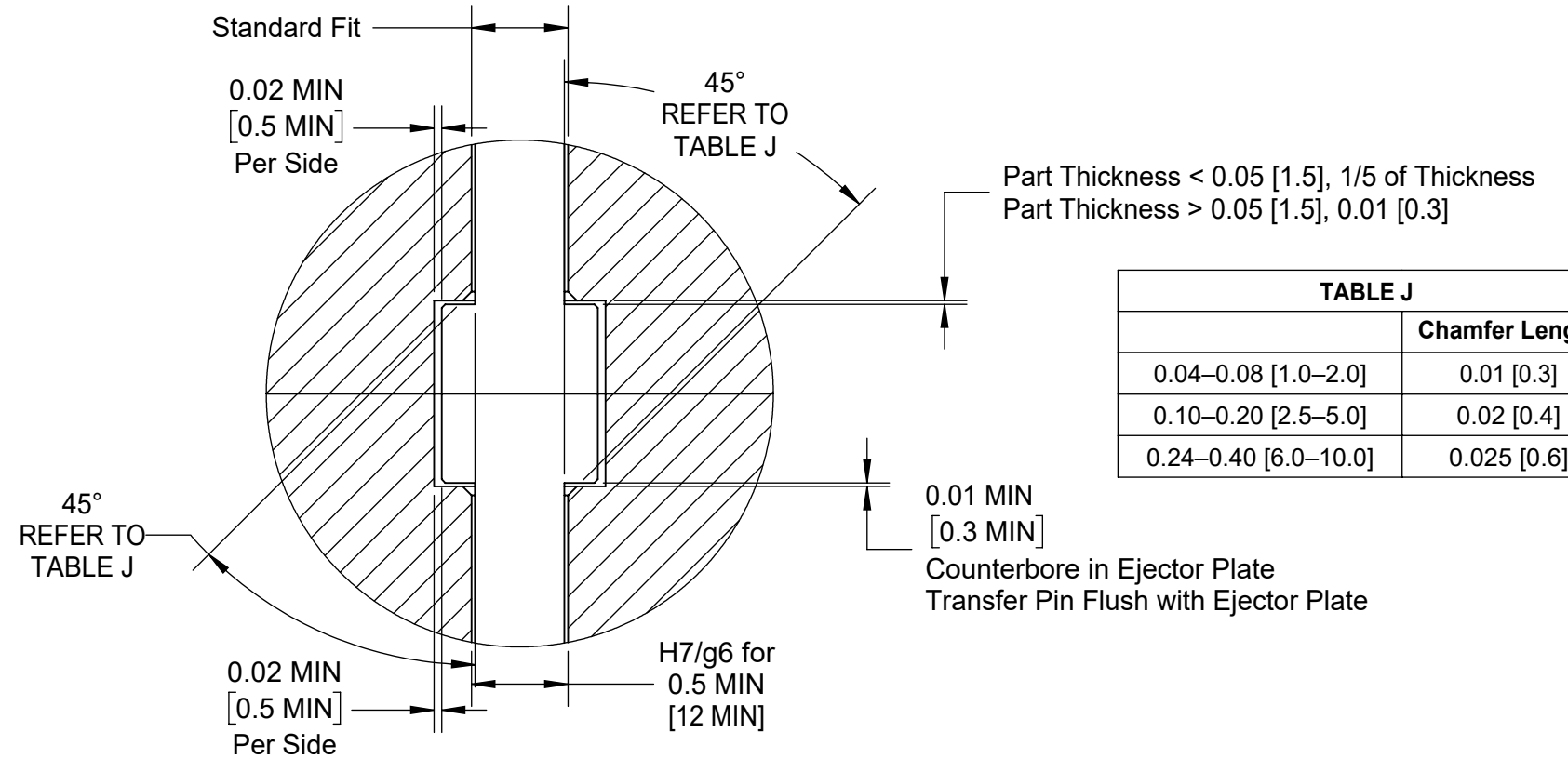
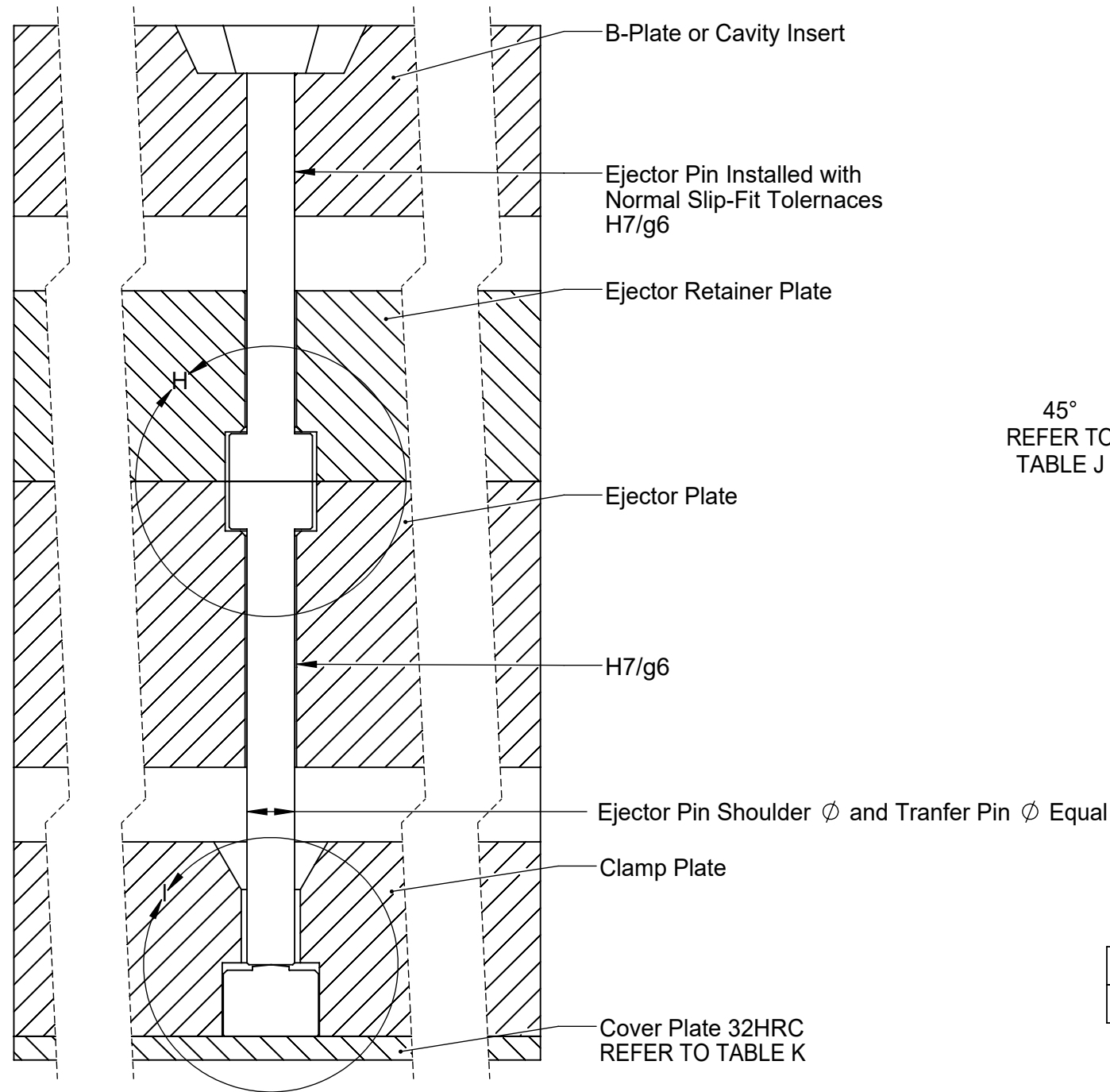
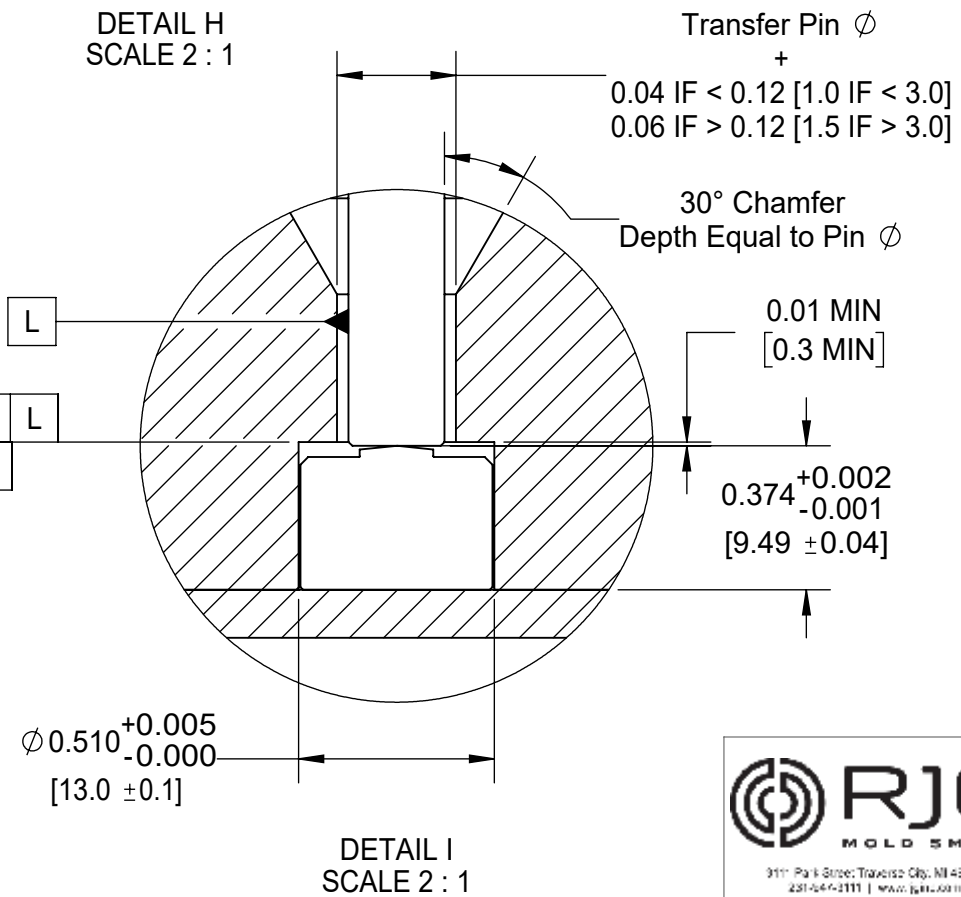


TABLE J	
	Chamfer Length
0.04–0.08 [1.0–2.0]	0.01 [0.3]
0.10–0.20 [2.5–5.0]	0.02 [0.4]
0.24–0.40 [6.0–10.0]	0.025 [0.6]



	0.001	[0.03]	L
	0.001	[0.03]	

- NOTES:
1. CLAMP PLATE APPLICATIONS REQUIRE GUIDED EJECTION
 2. EJECTOR AND TRANSFER PIN CONCENTRICITY MUST BE WITHIN 0.030" [0.76] OR 10% OF EJECTOR PIN DIA, WHICHEVER IS SMALLER.
 3. ENCLOSED EJECTOR BOX SUGGESTED.
 4. DO NOT SCALE PRINT
 5. BREAK ALL SHARP EDGES, 0.005 [0.03] R MAX
 6. DIMENSIONS IN INCHES [MM], UNLESS NOTED
 7. TOLERANCES UNLESS SPECIFIED:
 XXX = ±0.003 [0.08]
 XX = ±0.01 [0.3]
 ANGLES = ±3° 30°

TABLE K	
Sensor Model	MIN Plate Thickness
MCSG-B-127-125	0.2 [5]
MCSG-B-127-500	0.25 [6.0]
MCSG-B-127-2000	0.25 [6.0]

REFER TO PRODUCT MANUAL FOR COVER PLATE ALTERNATIVES

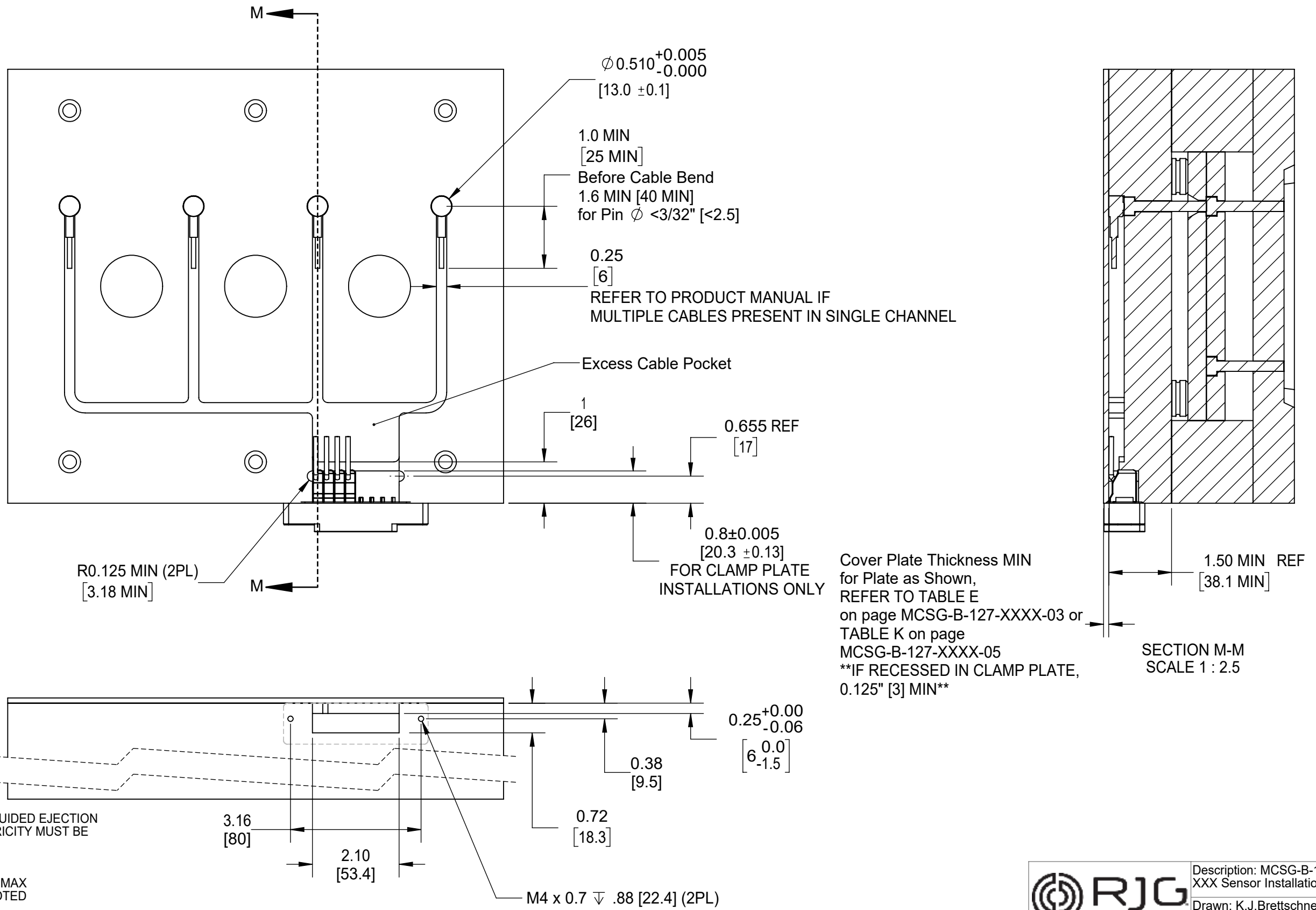
3111 Park Street, Traverse City, MI 49686
 231-944-2111 | www.rjg.com

Description: MCSG-B-127-XXXX Sensor Installation
 Drawn: K.J.Brettschneider
 Design:
 Check: M.Groleau
 Date: 05.30.2023

Drawing Title: MCSG-B-127-XXXX-06

Multi-Channel Strain Gage Sensor (MCSG-B-127-XXXX) Installation—Clamp Plate/Head-to-Head Installation

NOTE: Refer to Product Manual for Cable Channel and Cable Pocket Cover Options and for Electronics Mounting Options When Mold Temperature is Greater Than 140 °F [60 °C]

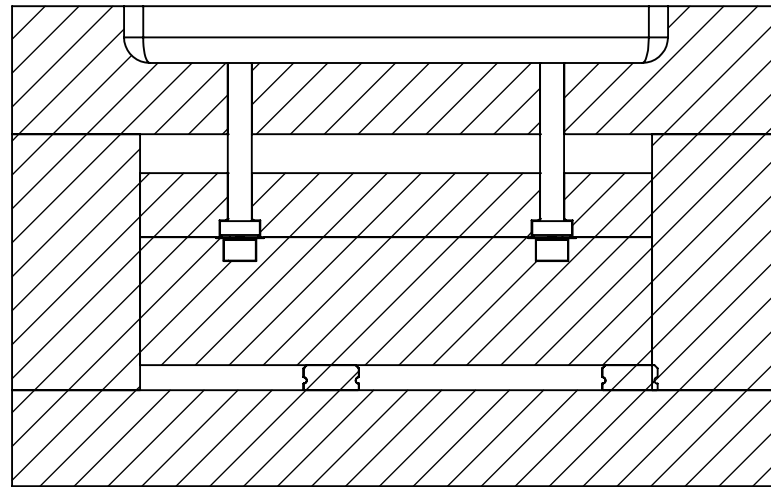
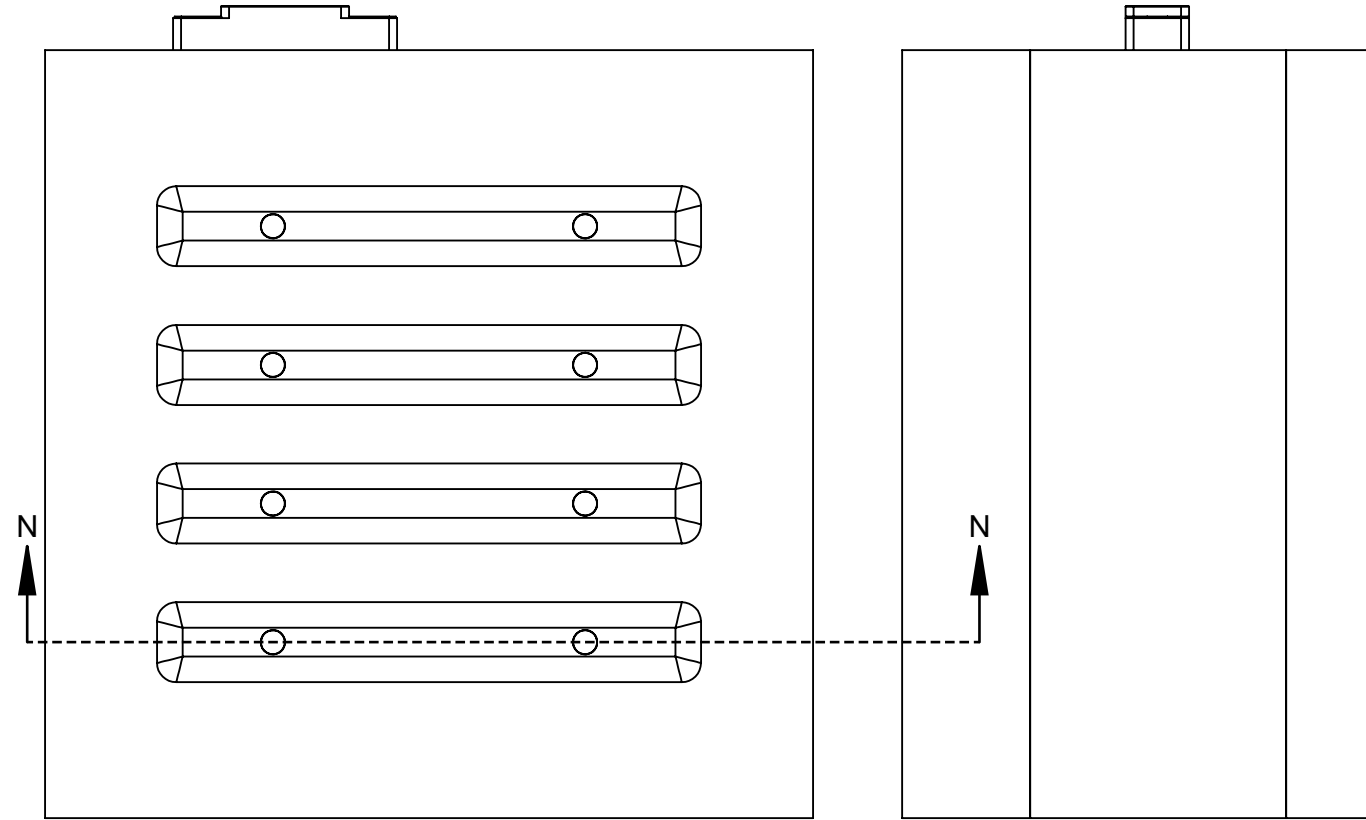


Cover Plate Thickness MIN for Plate as Shown, REFER TO TABLE E on page MCSG-B-127-XXXX-03 or TABLE K on page MCSG-B-127-XXXX-05
 IF RECESSED IN CLAMP PLATE, 0.125" [3] MIN

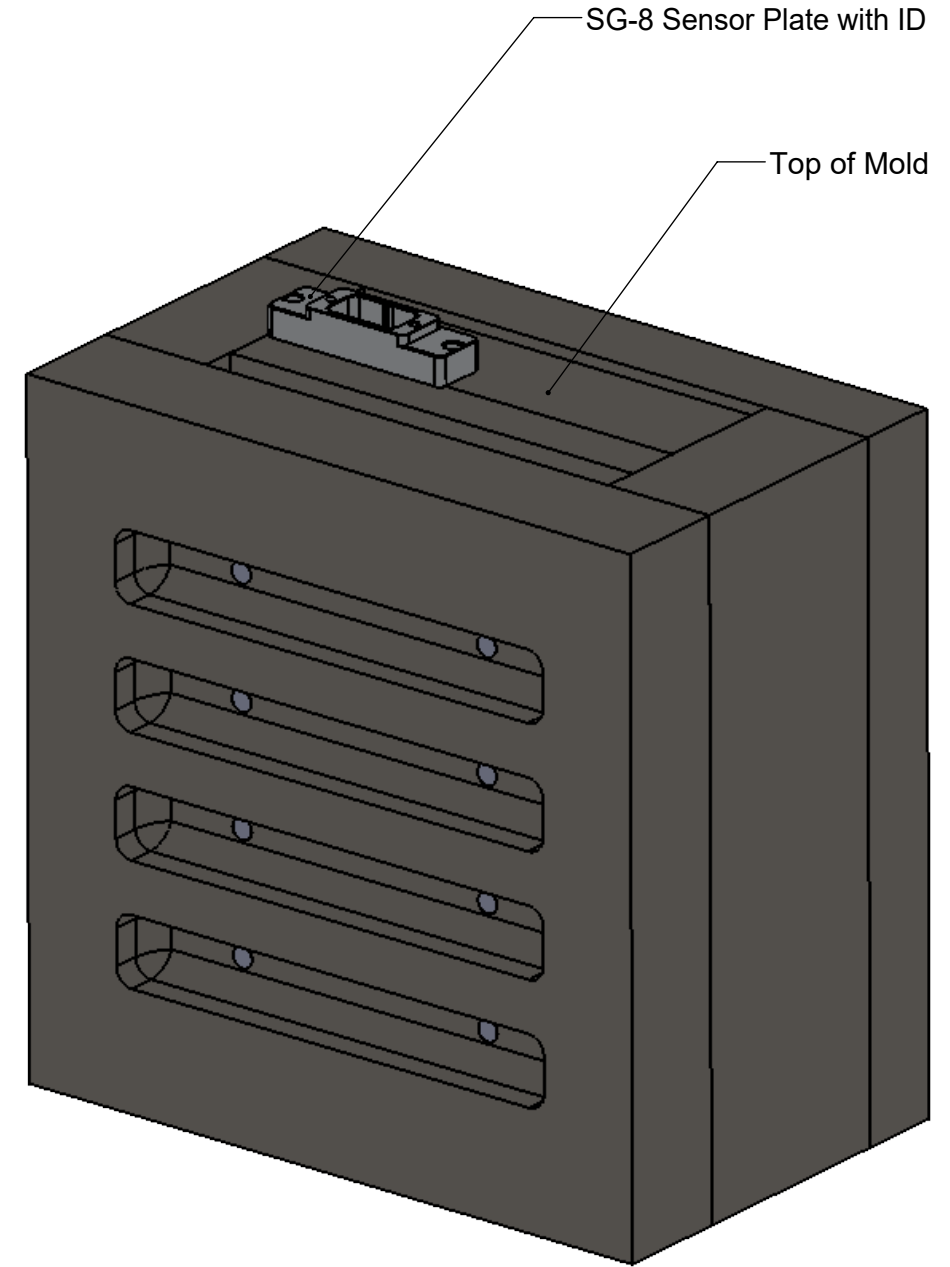
- NOTES:
1. CLAMP PLATE APPLICATIONS REQUIRE GUIDED EJECTION EJECTOR AND TRANSFER PIN CONCENTRICITY MUST BE
 2. ENCLOSED EJECTOR BOX SUGGESTED.
 3. DO NOT SCALE PRINT
 4. BREAK ALL SHARP EDGES, 0.005 [0.03] R MAX
 5. DIMENSIONS IN INCHES [MM], UNLESS NOTED
 6. TOLERANCES UNLESS SPECIFIED:
 XXX = ±0.003 [0.08]
 XX = ±0.01 [0.3]
 ANGLES = ±3° 30°
 - 7.

<p>3111 Park Street, Traverse City, MI 49686 231-944-2111 WWW.RJG.COM</p>	Description: MCSG-B-127-XXXX Sensor Installation
	Drawn: K.J.Brettschneider
	Check: M.Groleau
	Date: 05.30.2023

Multi-Channel Strain Gage Sensor (MCSG-B-127-XXXX) Installation—Ejector Plate Installation



SECTION N-N
SCALE 1 : 3



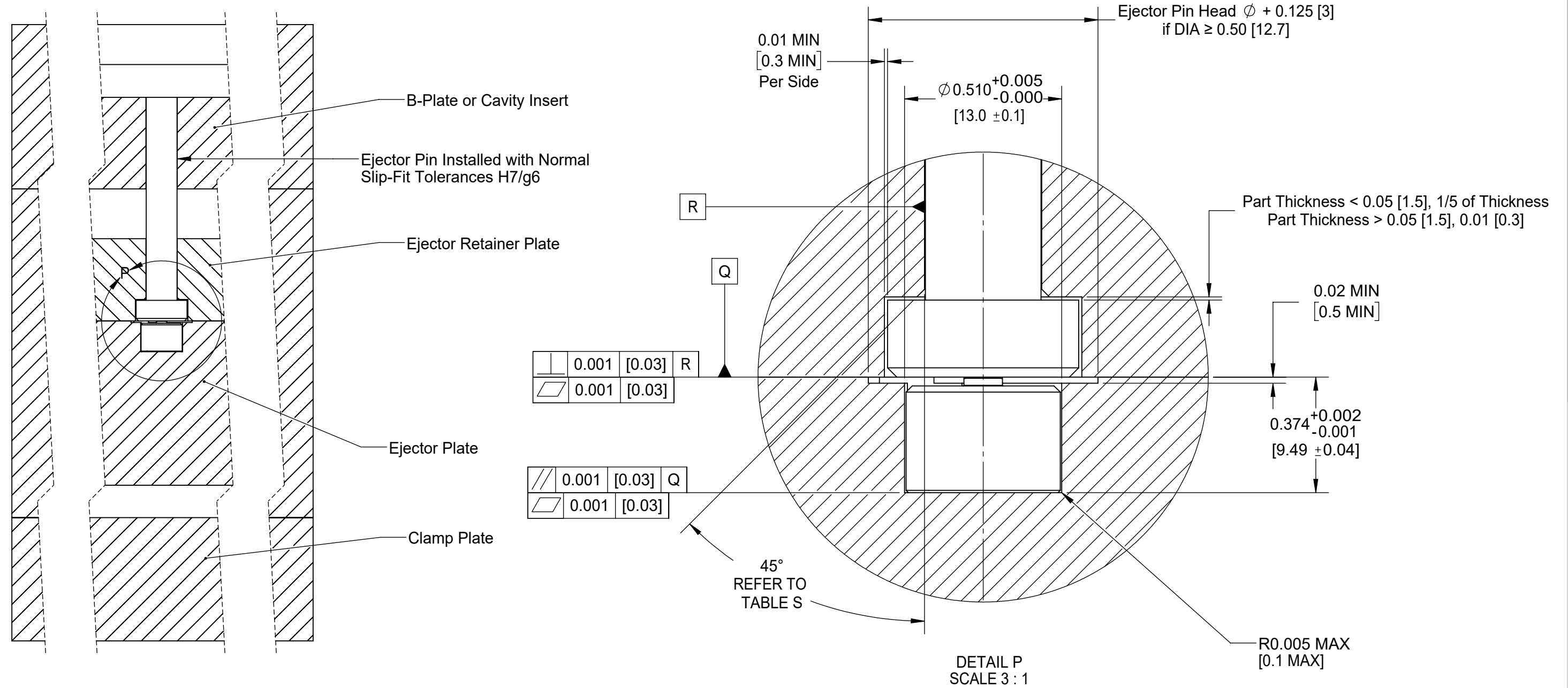
NOTES:

1. EJECTOR AND TRANSFER PIN CONCENTRICITY MUST BE WITHIN 0.030" [0.76] OR 10% OF EJECTOR PIN DIA, WHICHEVER IS SMALLER.
2. ENCLOSED EJECTOR BOX SUGGESTED.
3. DO NOT SCALE PRINT
4. BREAK ALL SHARP EDGES, 0.005 [0.03] R MAX
5. DIMENSIONS IN INCHES [MM], UNLESS NOTED
6. TOLERANCES UNLESS SPECIFIED:
 XXX = ± 0.003 [0.08]
 XX = ± 0.01 [0.3]
 ANGLES = $\pm 3^\circ$ 30°



Description: MCSG-B-127-XXXX Sensor Installation
 Drawn: K.J.Brettschneider
 Design:
 Check: M.Groleau
 Date: 05.30.2023

Multi-Channel Strain Gage Sensor (MCSG-B-127-XXXX) Installation—Ejector Plate Installation



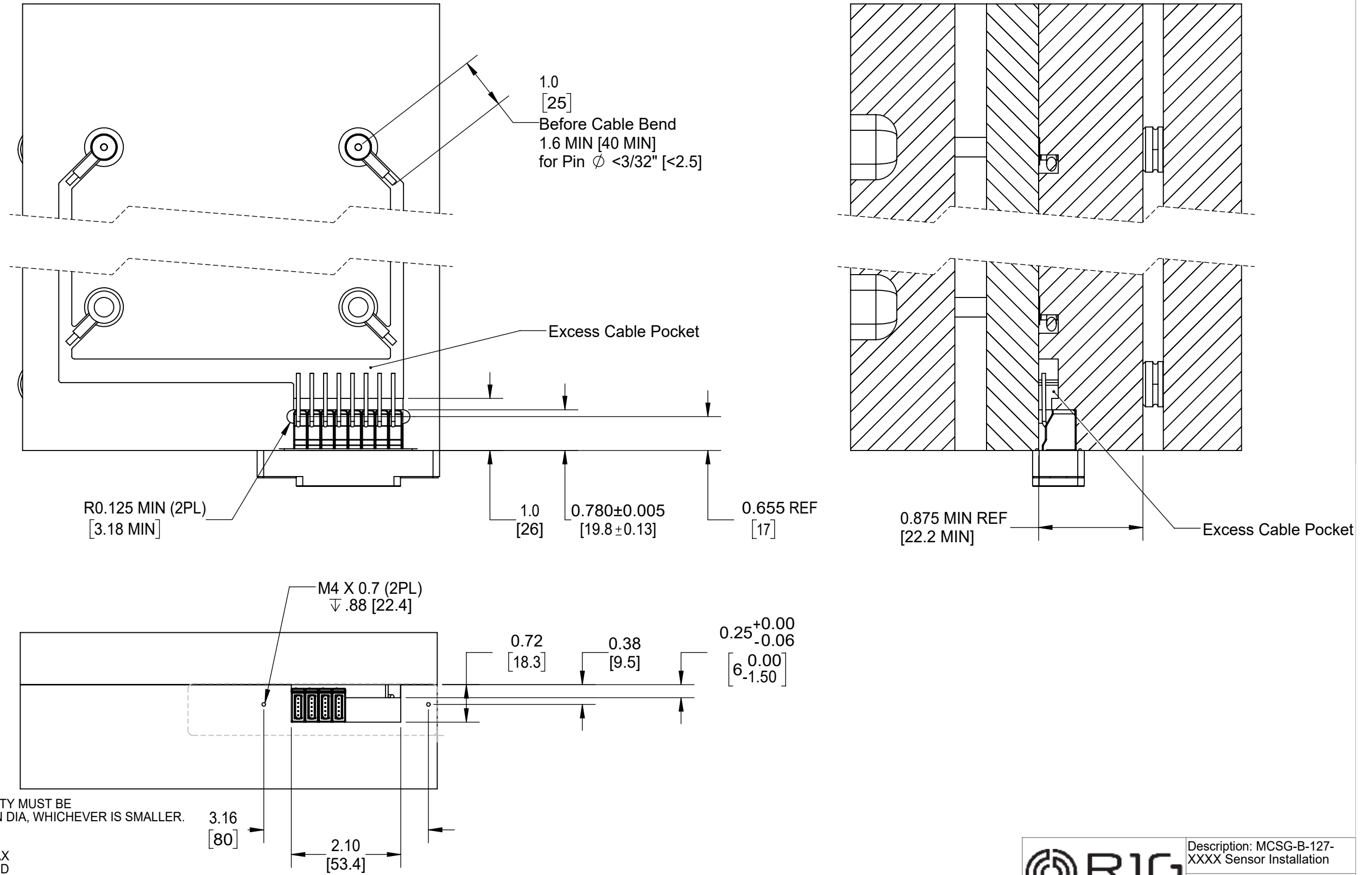
- NOTES:
- EJECTOR AND TRANSFER PIN CONCENTRICITY MUST BE WITHIN 0.030" [0.76] OR 10% OF EJECTOR PIN DIA, WHICHEVER IS SMALLER.
 - ENCLOSED EJECTOR BOX SUGGESTED.
 - DO NOT SCALE PRINT
 - BREAK ALL SHARP EDGES, 0.005 [0.03] R MAX
 - DIMENSIONS IN INCHES [MM], UNLESS NOTED
 - TOLERANCES UNLESS SPECIFIED:
 XXX = ±0.003 [0.08]
 XX = ±0.01 [0.3]
 ANGLES = ±3° 30°

TABLE S	
	Chamfer Length
0.04–0.08 [1.0–2.0]	0.01 [0.3]
0.10–0.20 [2.5–5.0]	0.02 [0.4]
0.24–0.40 [6.0–10.0]	0.025 [0.6]


3111 Park Street, Traverse City, MI 49686
 231-944-2111 | WWW.RJG.MI

Description: MCSG-B-127-XXXX Sensor Installation
 Drawn: K.J.Brettschneider
 Design:
 Check: M.Groleau
 Date: 05.30.2023

Multi-Channel Strain Gage Sensor (MCSG-B-127-XXXX) Installation—Ejector Plate Installation

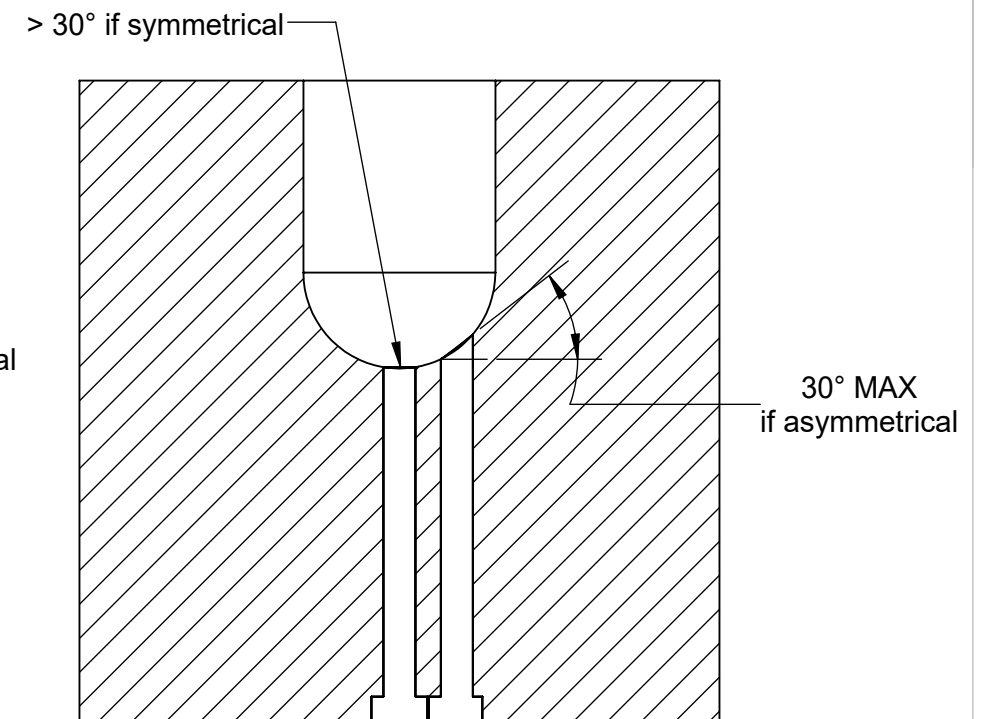
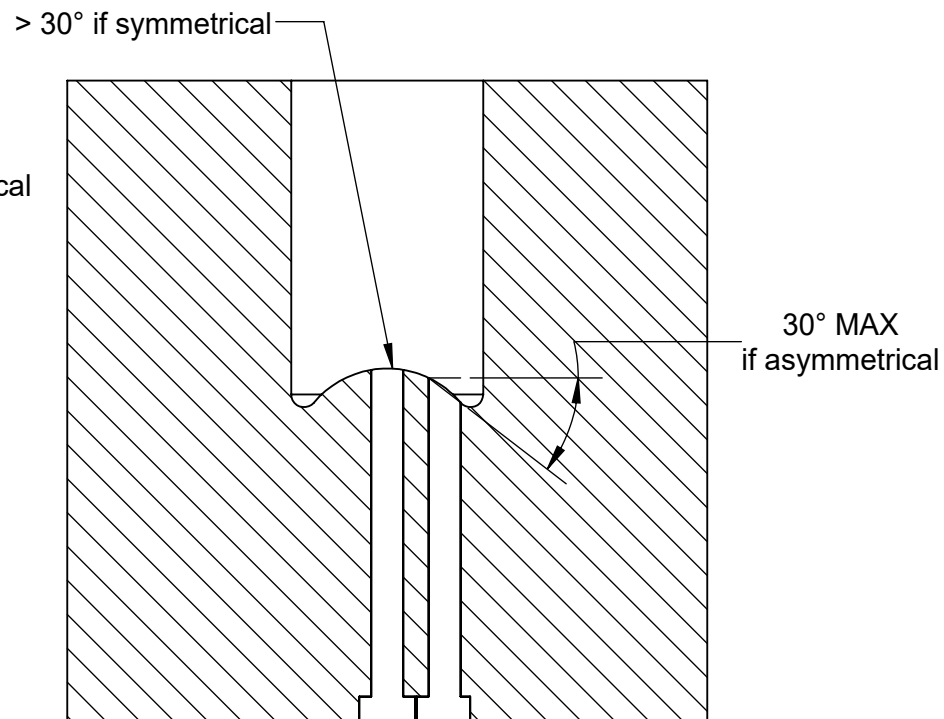
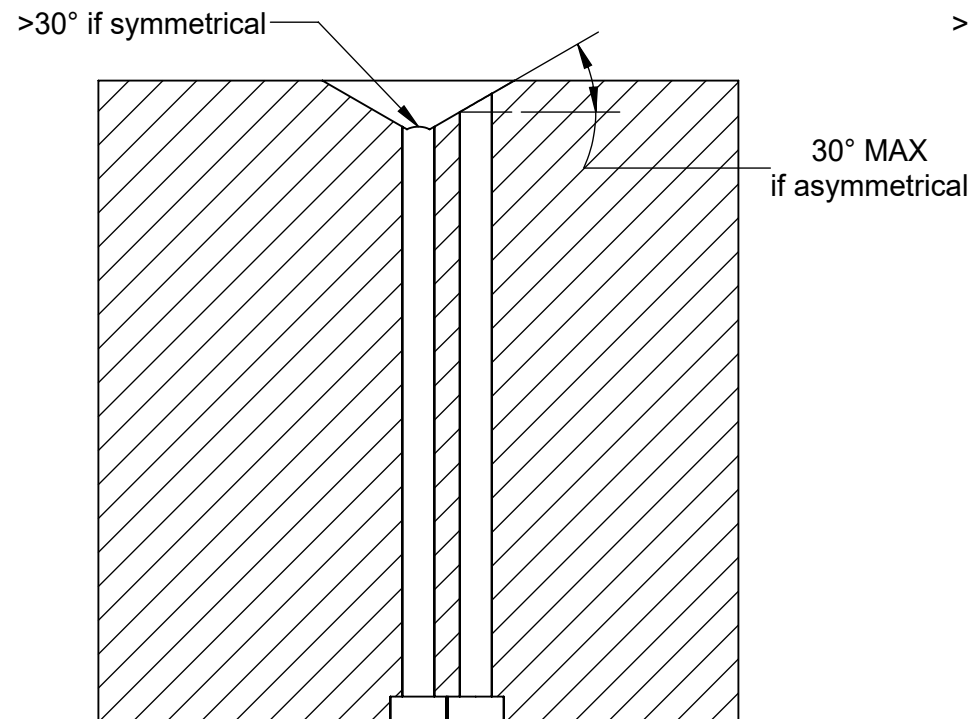
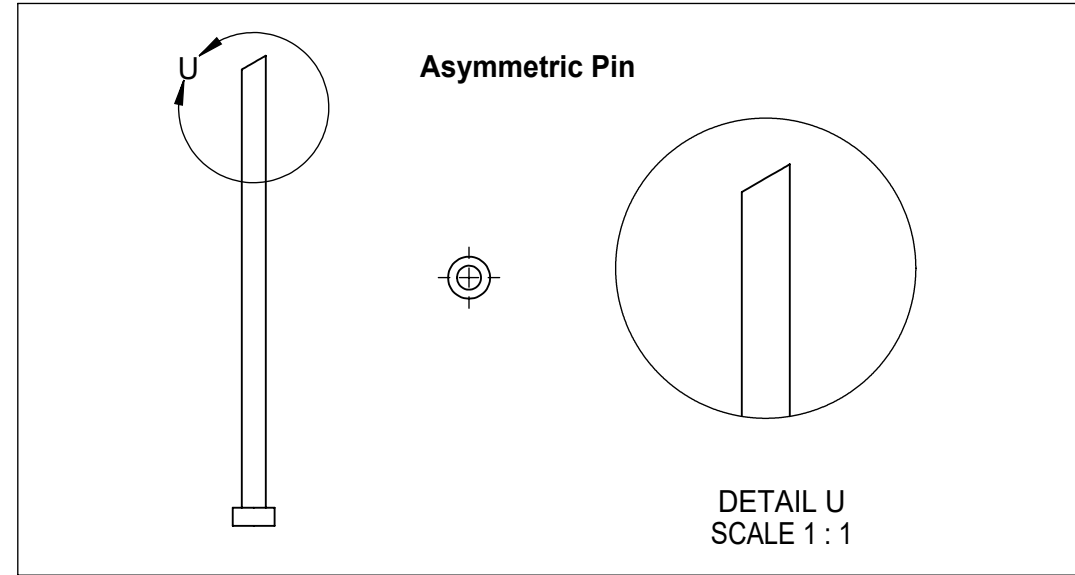
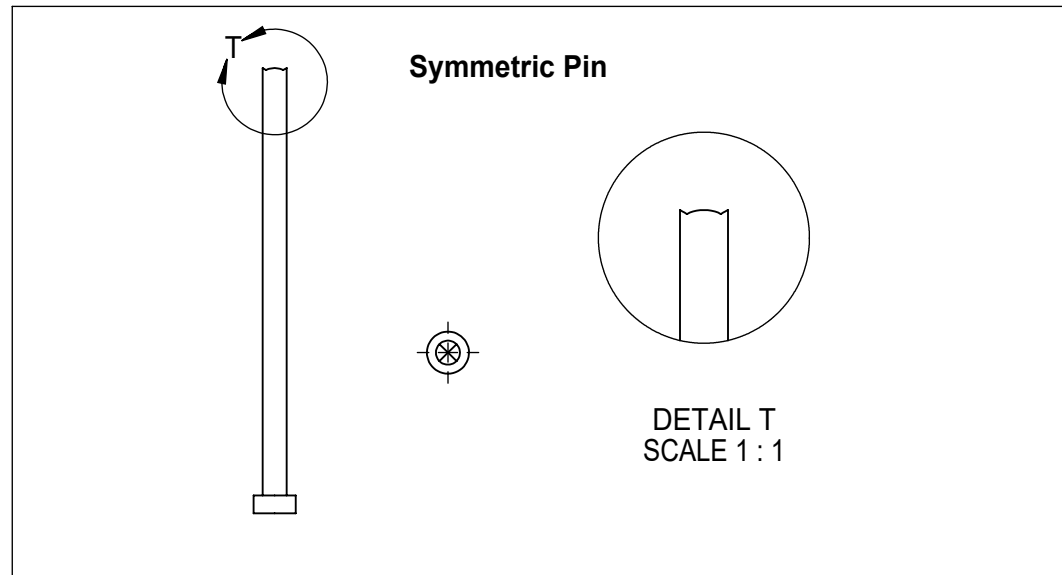


- NOTES:
1. EJECTOR AND TRANSFER PIN CONCENTRICITY MUST BE WITHIN 0.030" [0.76] OR 10% OF EJECTOR PIN DIA, WHICHEVER IS SMALLER.
 2. ENCLOSED EJECTOR BOX SUGGESTED.
 3. DO NOT SCALE PRINT
 4. BREAK ALL SHARP EDGES, 0.005 [0.03] R MAX
 5. DIMENSIONS IN INCHES [MM], UNLESS NOTED
 6. TOLERANCES UNLESS SPECIFIED:
 XXX = ±0.003 [0.08]
 XX = ±0.01 [0.3]
 ANGLES = ±3° 30°

 3111 Park Street, Traverse City, MI 49606 231-944-2111 www.rjg.com	Description: MCSG-B-127-XXXX Sensor Installation
	Drawn: K.J.Brettschneider
	Design:
	Check: M.Groleau
Date: 05.30.2023	

MCSG-B-127-XXXX Sensor Installation—Contoured Pin Angle Specification

NOTE: Contoured/angled pins (asymmetric) not to exceed 30° MAX unless pin design is symmetrical to provide even, downward pressure across pin surface to loading of sensor. Contact RJG Customer Support for assistance in verification of contoured/angled pin use.



NOTES:

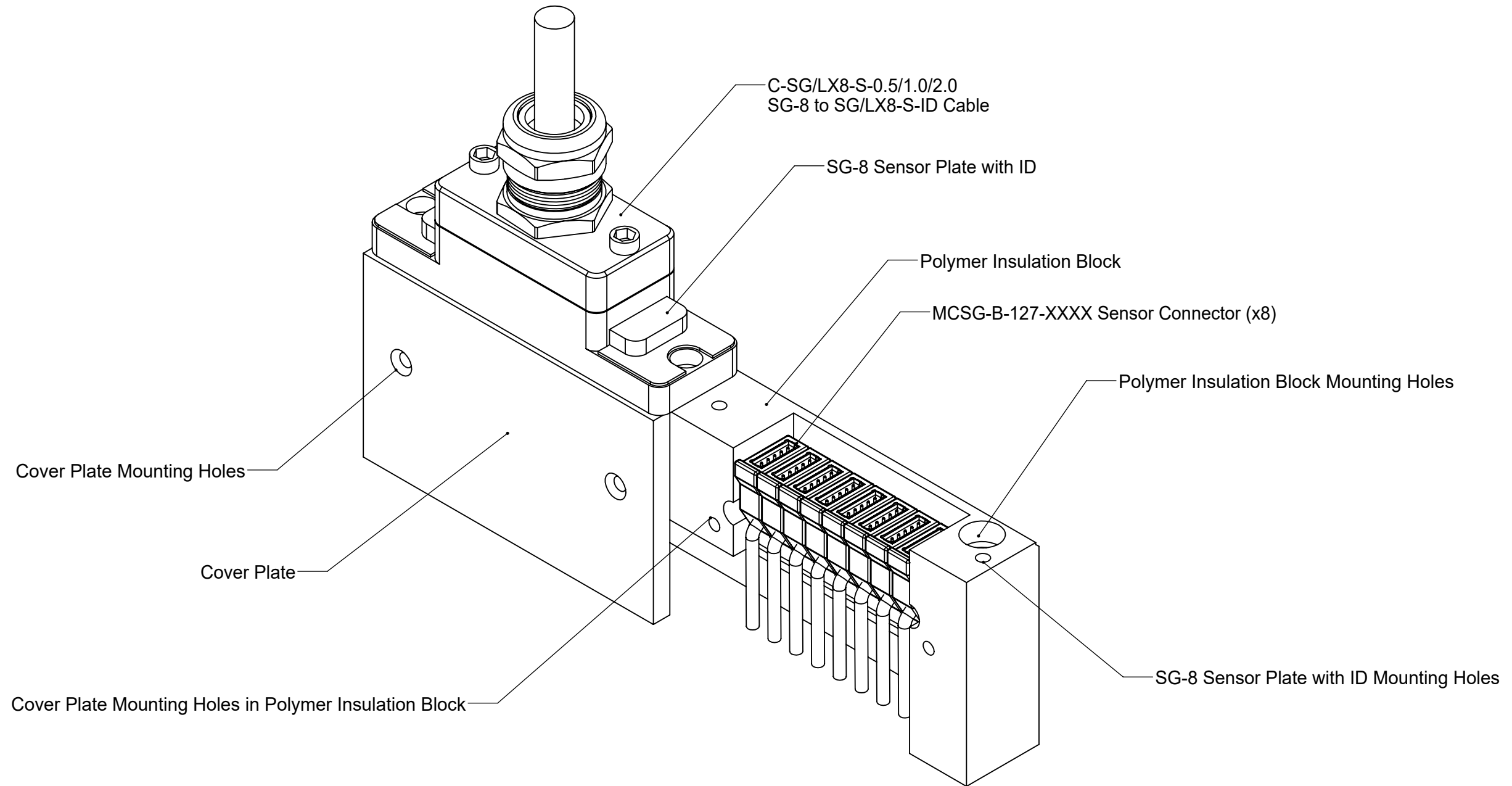
1. EJECTOR AND TRANSFER PIN CONCENTRICITY MUST BE WITHIN 0.030" [0.76] OR 10% OF EJECTOR PIN DIA, WHICHEVER IS SMALLER.
2. ENCLOSED EJECTOR BOX SUGGESTED.
3. DO NOT SCALE PRINT
4. BREAK ALL SHARP EDGES, 0.005 [0.03] R MAX
5. DIMENSIONS IN INCHES [MM], UNLESS NOTED
6. TOLERANCES UNLESS SPECIFIED:
 XXX = ±0.003 [0.08]
 XX = ±0.01 [0.3]
 ANGLES = ±3° 30°

 <p>3111 Park Street, Traverse City, MI 49686 231-944-2111 WWW.RJG.MI</p>	Description: MCSG-B-127-XXXX Sensor Installation
	Drawn: K.J.Brettschneider
	Check: M.Groleau
	Date: 05.30.2023

Drawing Title: MCSG-B-127-XXXX-11

Multi-Channel Strain Gage Sensor (MCSG-B-127-XXXX) Installation—High Temperature Installation

NOTE: The sensor electronics must be kept below 140 °F (60 °C) for all MCSG-B-127-XXXX sensor models. Refer to the drawing below as a guide; RJG does NOT provide polymer assembly pictured below—polymer assembly and design is responsibility of customer. Contact RJG Customer Support for assistance with high-temperature sensor protection designs.



NOTES:

1. EJECTOR AND TRANSFER PIN CONCENTRICITY MUST BE WITHIN 0.030" [0.76] OR 10% OF EJECTOR PIN DIA, WHICHEVER IS SMALLER.
2. ENCLOSED EJECTOR BOX SUGGESTED.
3. DO NOT SCALE PRINT
4. BREAK ALL SHARP EDGES, 0.005 [0.03] R MAX
5. DIMENSIONS IN INCHES [MM], UNLESS NOTED
6. TOLERANCES UNLESS SPECIFIED:
XXX = ±0.003 [0.08]
XX = ±0.01 [0.3]
ANGLES = ±3° 30°



Description: MCSG-B-127-XXXX Sensor Installation
Drawn: K.J.Brettschneider
Design:
Check: M.Groleau
Date: 05.30.2023